

treehouse

LONDON

GROUP DINING AND
Private Events

2026



treehouse

LONDON

Perfectly placed high above London's historic Regent Street, Treehouse Hotel provides the ideal backdrop for private events and parties of all sizes.

With uninterrupted views of London's iconic skyline, there's no better place to gather and raise a toast. Designed to appeal to the child in all of us, Treehouse is playful, curious, rustic and nostalgic.

@staytreehouse





OUR *Flexible* RESTAURANTS

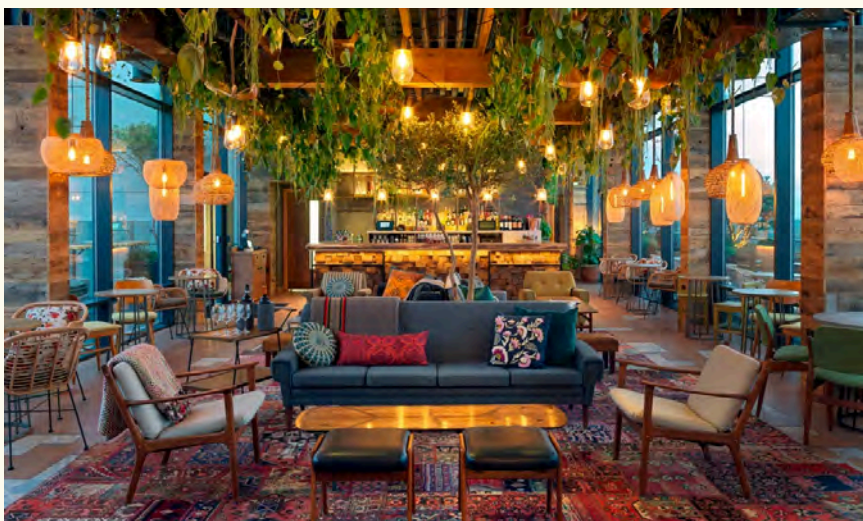


MADERA

Up to 260 guests standing 130 sitting

Madera at Treehouse London with its buzzing atmosphere offers unique interpretations of elevated Mexican cuisine and cocktails served across breakfast, lunch, dinner and at our signature high energy weekend brunch.

As the sun goes down, the lights in the hanging gardens illuminate to usher in the night and all its energy, music and celebrations.



THE NEST

Up to 200 guests standing 44 seated

fly up to our rooftop bar, The Nest. A 360-degree vista, wraparound terrace and DJ booth provide all the makings for a perfect party. The Nest is the ultimate venue with its own craft cocktail bar and direct access from the ground floor via a private lift.

From "I do's" to big ideas, our space blends natural charm with room to dream big. This airy, flexible space is perfect for weddings, retreats, and everything in between.





OUR *spaces*



NEST TERRACE

Up to 100 guests seated and standing

Perched high above the city on the 16th floor, our stunning rooftop terrace offers an unforgettable 360-degree view of the iconic London skyline. Whether you're celebrating a birthday, planning a romantic proposal, or bringing the team together, this open-air oasis sets the perfect scene. With the city stretching out beneath you, every moment feels elevated.



MADERA PRIVATE

Up to 80 guests standing or seated

Madera features a private extension of the restaurant overlooking the stunning views of west London that seats up to 80 guests. The private room can also be arranged in a theatre style ideal for launches, presentations and breakfast meetings.



BIRCH & OAK

Up to 10 guests Up to 16 guests

Gather in our private dining spaces ideal for smaller groups of up to 16 guests or less. Host team breakfasts, inspiring board meetings and creative group sessions with the use of an in-built screen, a conference phone, charge points, flip charts and stationery.





MADERA

at treehouse london

As the little sister to Los Angeles based Toca Madera, this ingredient - forward concept is built for the bustling London diner. Our Menu focus on farm-fresh plates that amplify the bold, playful flavours of Mexico, using organic, seasonal ingredients served alongside generous choices to host vegan, vegetarian, and gluten-free guests. The expansive menus comprise of a raw bar, taqueria, starters and salads, and specialties served on lava stones.

Our cocktails showcase individual flavours such as turmeric, chili de arbol, guava, guajillo-mango, prickly pear, butterfly pea flower tea, yuzu and tamarind, enhanced by an extensive collection of premium mezcals and tequilas, as well as a rotating list of international beers and wines.

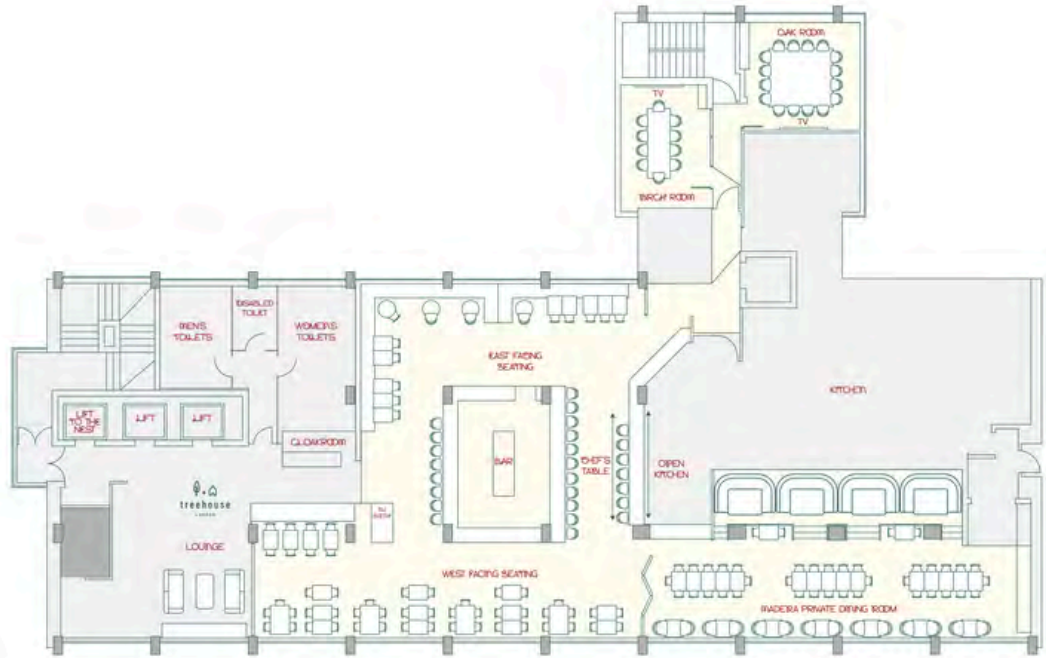
@MADERALONDON



MADERA FLOORPLAN

MADERA

224 SQ M

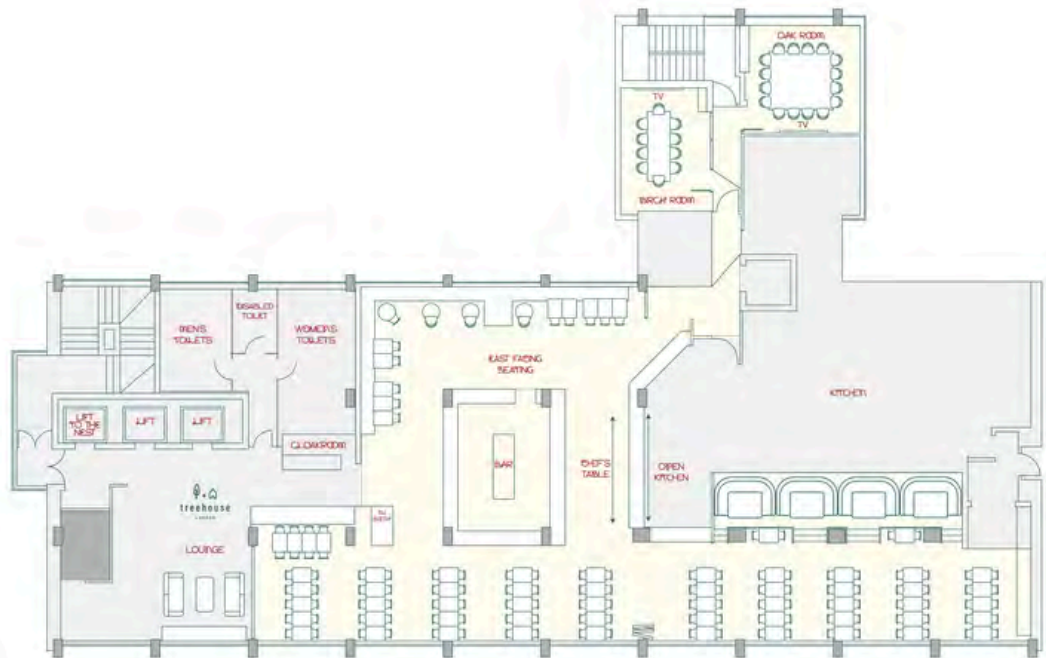


EVENT FLOORPLAN SEATED STYLE

MADERA

SEATED MEAL

224 SQ M



COVERS

SEATED MEAL

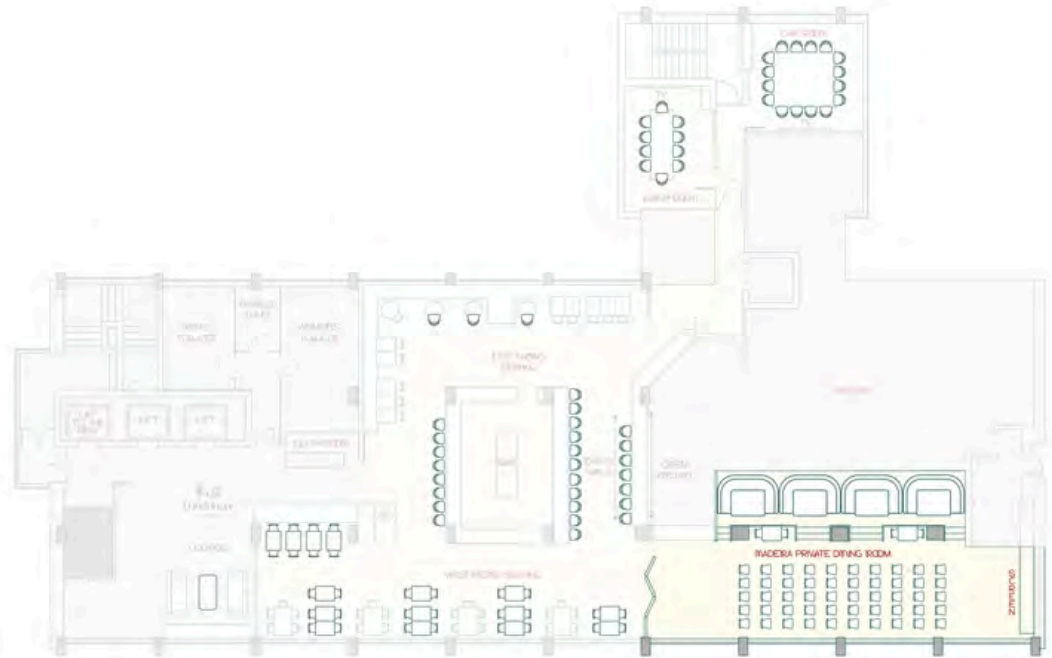
132

EVENT FLOORPLAN

PRIVATE DINING - THEATRE STYLE

MADERA

PRIVATE DINING ROOM
THEATRE STYLE



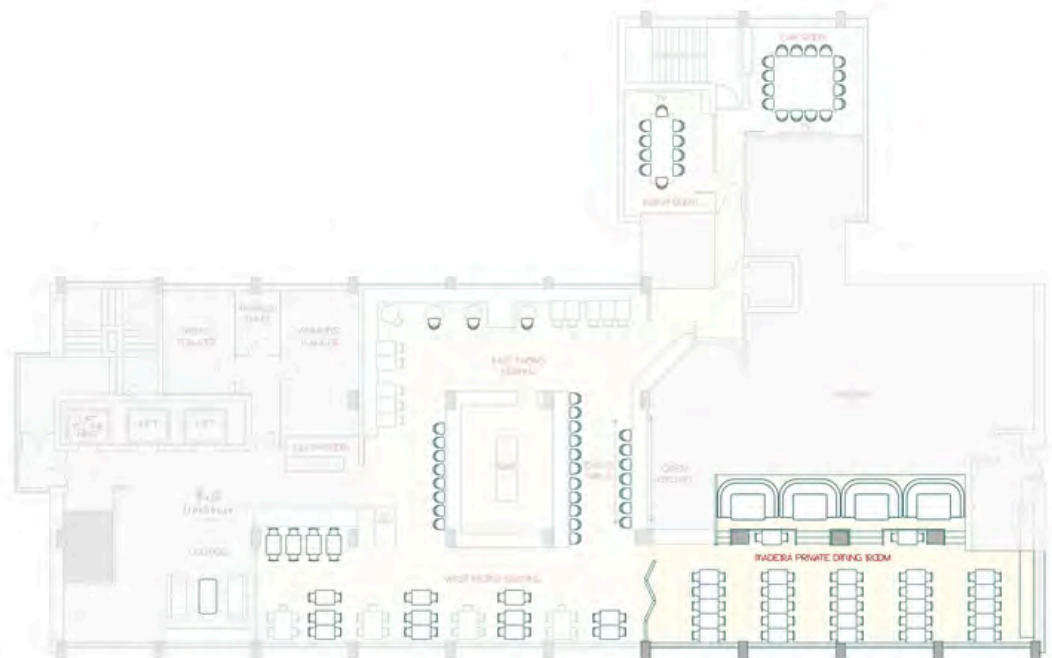
	COVERS
THEATRE STYLE	50
THEATRE STYLE WITH LUNCH	30

EVENT FLOORPLAN

PRIVATE DINING - SEATED STYLE

MADERA

PRIVATE DINING ROOM
SEATED MEAL

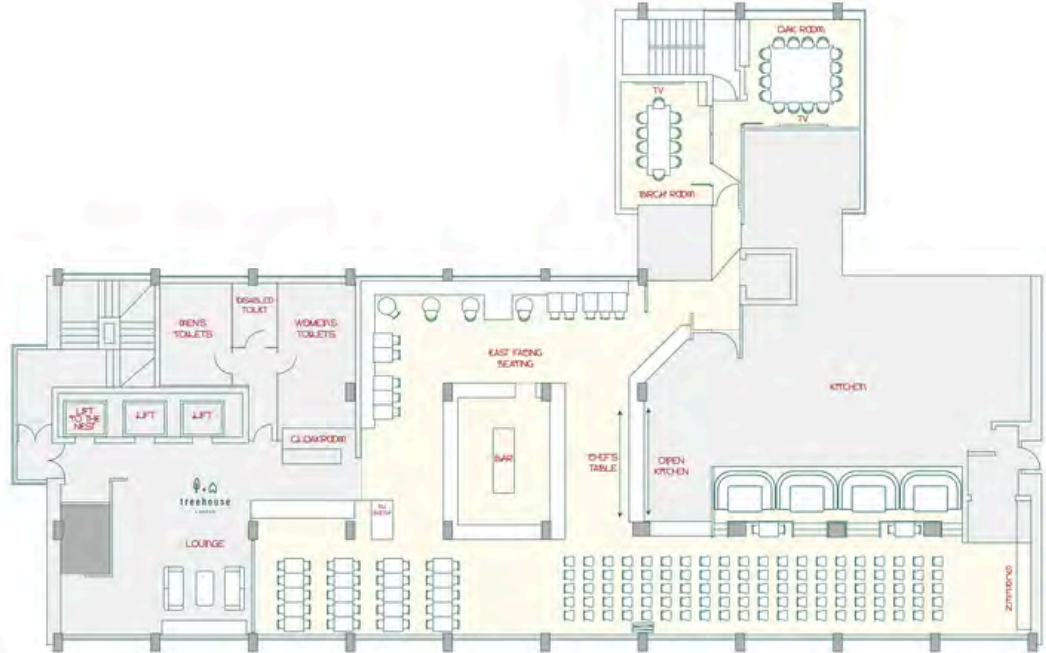


	COVERS
SEATED MEAL	80

EVENT FLOORPLAN

THEATRE STYLE

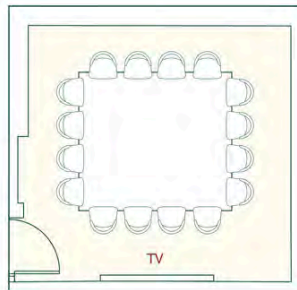
MADERA
THEATRE STYLE
224 SQ M



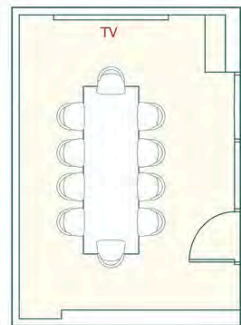
COVERS	
THEATRE STYLE	100

PRIVATE DINING ROOMS FLOORPLAN

OAK
21.2 SQ M



BIRCH
17.7 SQ M



COVERS	
MEETING ROOM	16

COVERS	
MEETING ROOM	10

The Nest

in treehouse

Elevate your event at our stylish rooftop bar where skyline views meet handcrafted cocktails. Indulge in delightful canapes or bold culinary stations, and unwind in a chic open-air setting framed by floor-to-ceiling windows. With dynamic DJ sets and an atmosphere that evolves from golden hour to late night, Nest delivers an unforgettable rooftop experience above the city.

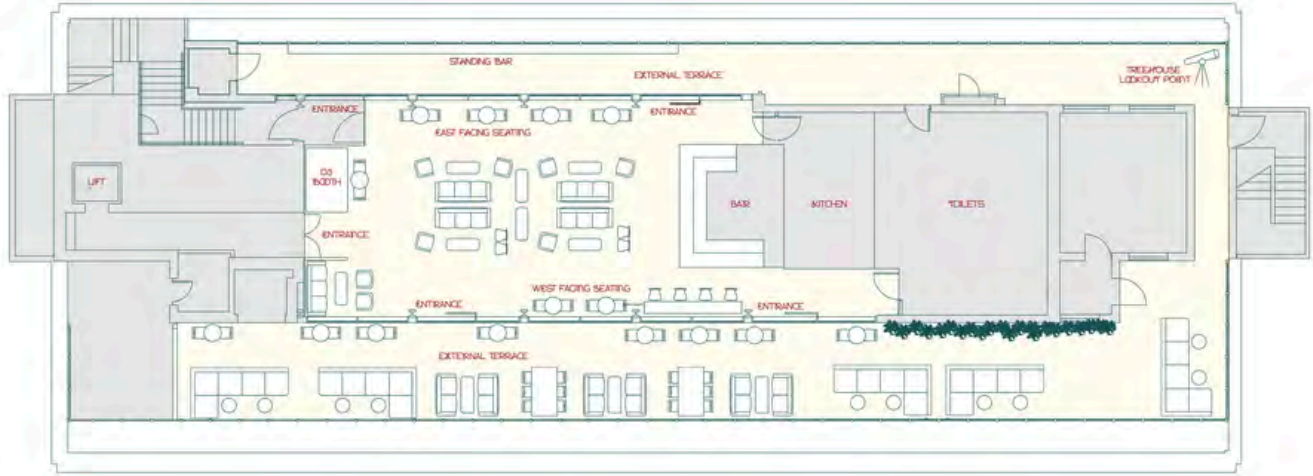
@thenestintreehouse



THE NEST FLOORPLAN

NEST

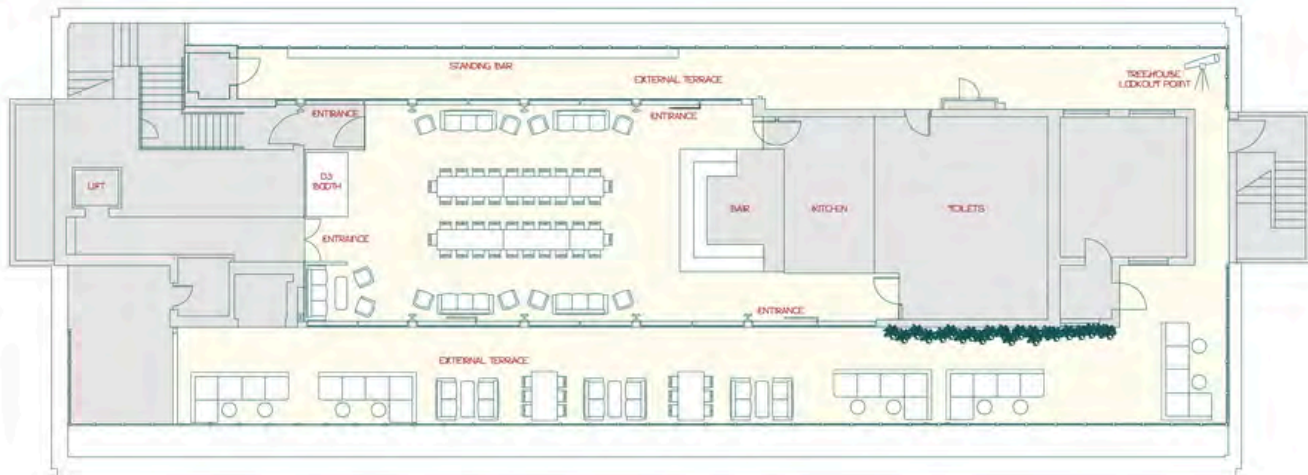
90 SQ M
TERRACE 148 SQ M



EVENT FLOORPLAN SEATED STYLE

NEST

SEATED MEAL
—
90 SQ M
TERRACE 148 SQ M

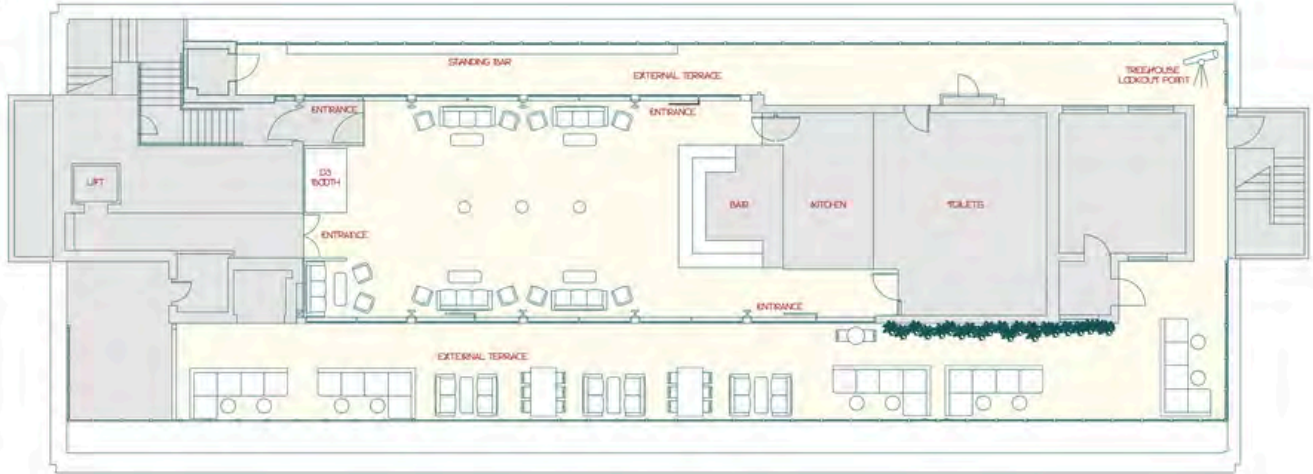


	COVERS
SEATED MEAL	44

EVENT FLOORPLAN

STANDING RECEPTION STYLE

NEST
 STANDING RECEPTION
 —
 90 SQ M
 TERRACE 148 SQ M

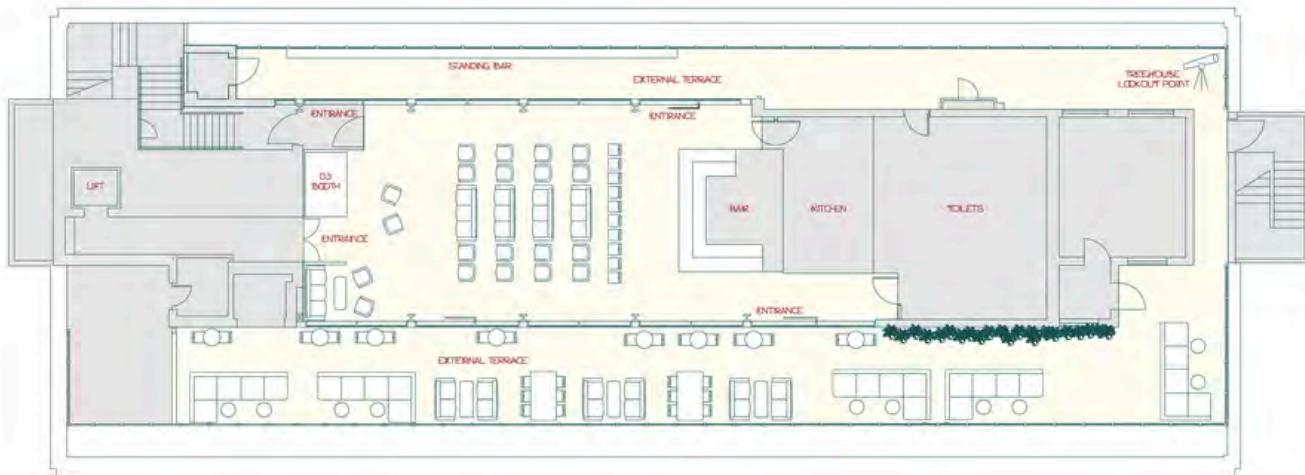


COVERS	
INDOORS ONLY	100
INDOORS + ROOF TERRACE (WEATHER DEPENDENT)	200

EVENT FLOORPLAN

THEATRE STYLE

NEST
 THEATRE STYLE
 —
 90 SQ M
 TERRACE 148 SQ M



COVERS	
THEATRE STYLE	50



FAQ'S

SERVICE

A discretionary service charge of 12.5% will be added to your bill.

EXTRAS

AV

55" Screens located in Oak and Birch. Microphones available in Madera and The Nest. Screens are available in Madera Private.

Live music or a DJ can be arranged by management.

Private cloakroom available for both venues.

Express lift access to The Nest.

STAY AT TREEHOUSE

Looking to accommodate guests for your event? Stay in one of the hotel's 95 rooms. Contact our sales team to discuss your requirements:

Sales@treehousehotelslondon.com



TREEHOUSE HOTELS LONDON

| +44 (0)20 7580 0111

| SALES@TREEHOUSEHOTELS.LONDON.COM

treehouse

HOTELS

