







# ABOUT TREEHOUSE HOTELS

Treehouse Hotels was founded on the ideas that inspire a child to build a treehouse. Adventure, independence, cosy spaces and repurposing crafty things are what make a place warm and special. That's why every Treehouse Hotel celebrates found objects, nostalgic tunes, handmade details and locally sourced treats.





# TREEHOUSE HOTEL *Manchester*

Treehouse Manchester is the second hotel within the Treehouse Hotels brand and second hotel for Starwood Hotels in the UK. Within our Treehouse, every detail is imagined through the carefree, optimistic lens of childhood and balanced with a distinctly modern sensibility. With attentive service, locally inspired fun amenities, thoughtful programming, and several food & beverage offerings, we are about playfulness and freedom.

Discover More

[THMC-sales@treehousehotels.com](mailto:THMC-sales@treehousehotels.com)

[www.treehousehotels.com/manchester](http://www.treehousehotels.com/manchester)

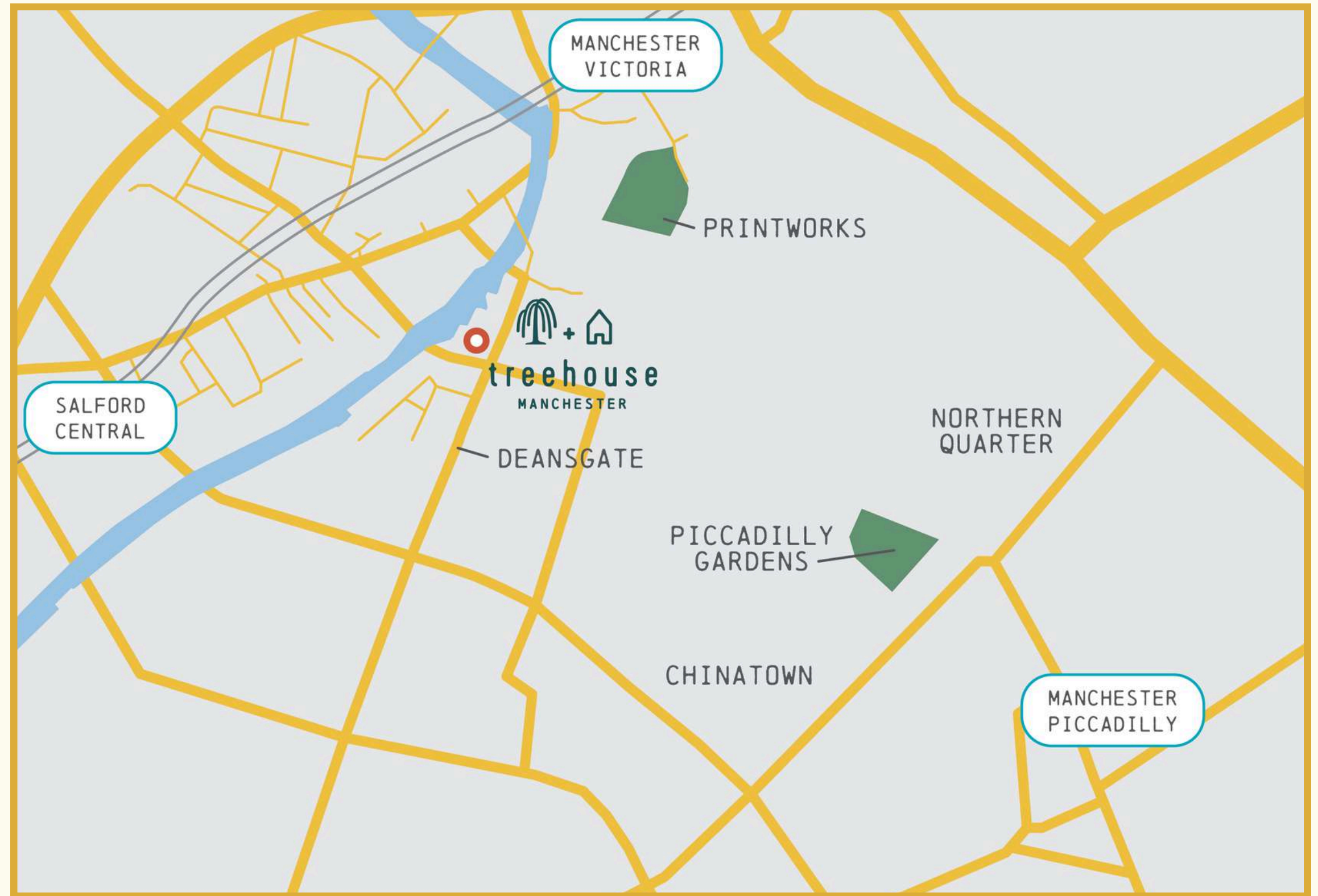




# LOCATION

## Traveling to Treehouse Manchester

International transport links  
from Manchester Airport, 30  
minutes from Treehouse  
Manchester and a 2-hour train  
journey to London Euston.







# SLEEP

Climb up and cosy into your nature nook  
at Treehouse Manchester, where each  
guest room boasts its own quirky flair  
and perfectly imperfect charm.



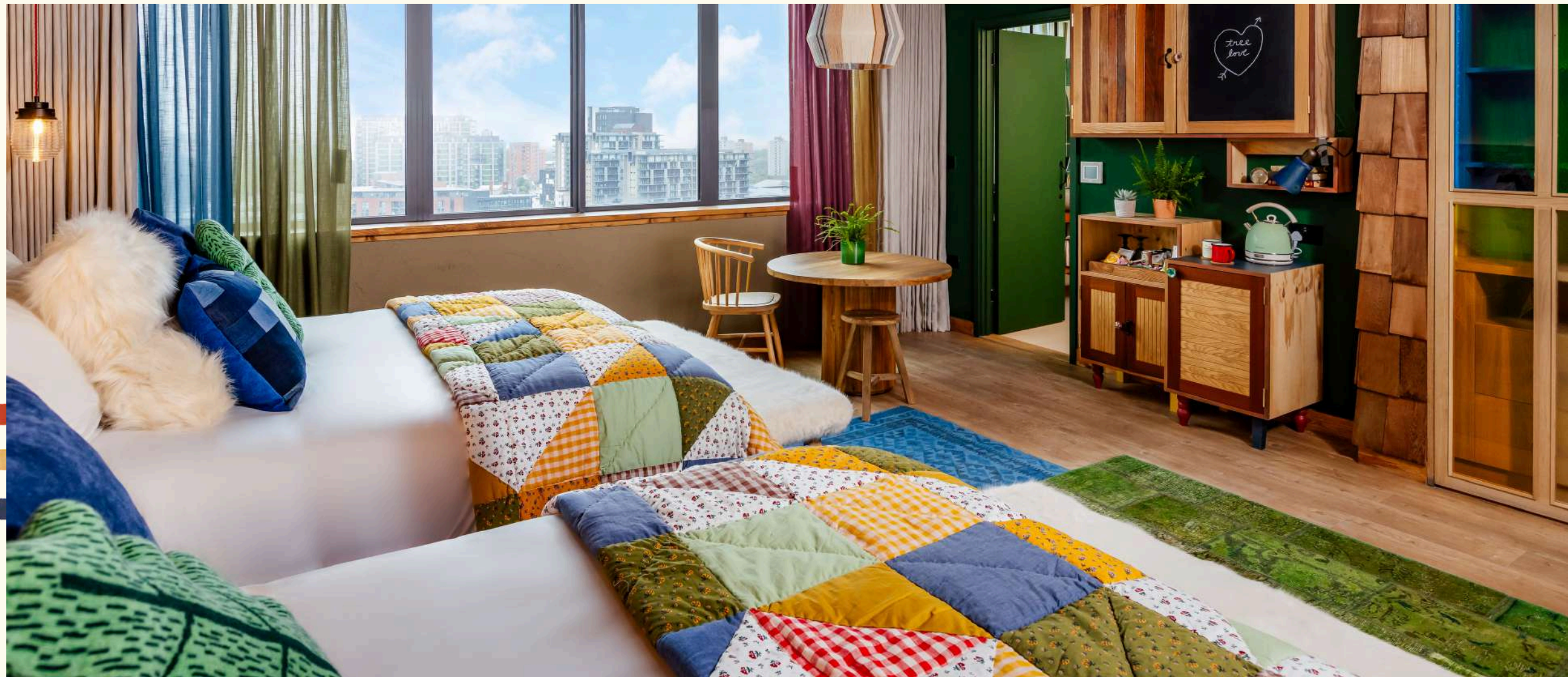
# GUEST ROOMS

Our rooms are cosy, welcoming and colourful, just like your childhood clubhouse.

Rooms: 224 w/interconnecting rooms

Suites: 14 w/1 Penthouse treetop Suite opening in 2026

Panoramic windows, tech-ready rooms, high speed WiFi





# ROOM *Categories*

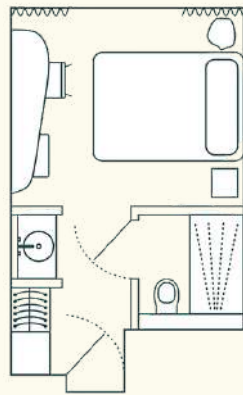
## 224 ROOMS

- 43 King - 16m<sup>2</sup>
- 40 Lookout King - 16m<sup>2</sup>
- 43 Studio suite - 31m<sup>2</sup>
- 56 Lookout studio suite - 32M<sup>2</sup>
- 15 Two queens - 31M<sup>2</sup>
- 18 Lookout two queens - 31M<sup>2</sup>
- 4 Club suite - 49M<sup>2</sup>
- 4 Cabin suite - 65M<sup>2</sup>
- 1 Treetop suite - 100m<sup>2</sup>
- 1 Connecting kings - 55M<sup>2</sup>
- 4 Connecting king & lookout king - 55M<sup>2</sup>
- 1 Connecting studio & lookout king - 57M<sup>2</sup>
- 3 Connecting lookout studio & lookout king - 57m<sup>2</sup>
- 3 Connecting studio suites - 64M<sup>2</sup>
- 3 Connecting lookout studio suites - 64M<sup>2</sup>

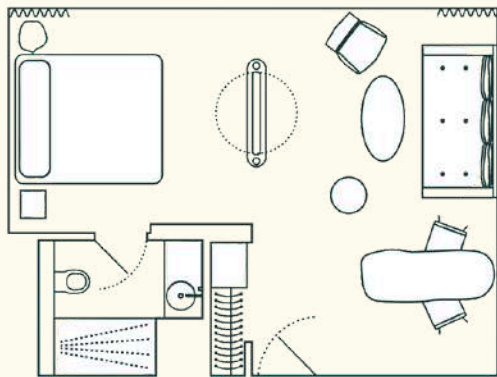




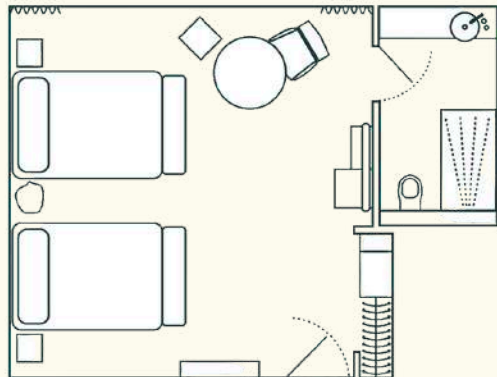
# ROOM LAYOUTS



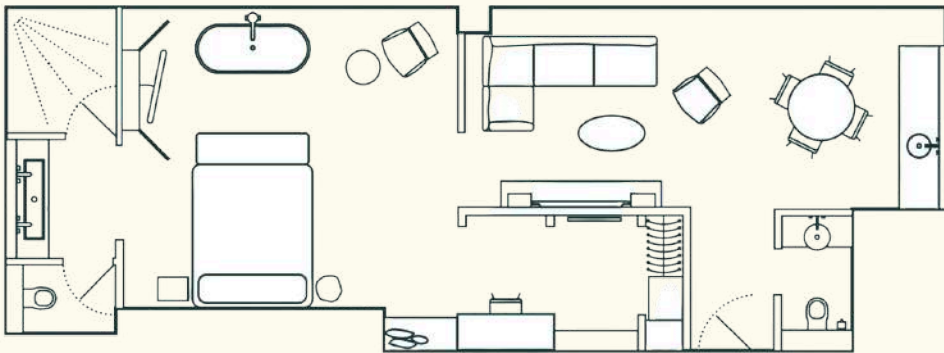
KING & LOOKOUT KING



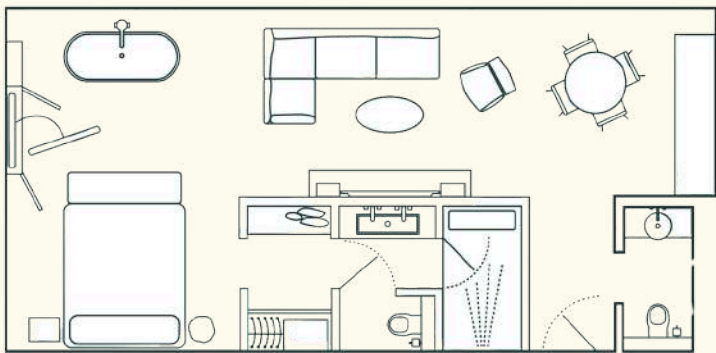
STUDIO SUITE &  
LOOKOUT STUDIO SUITE



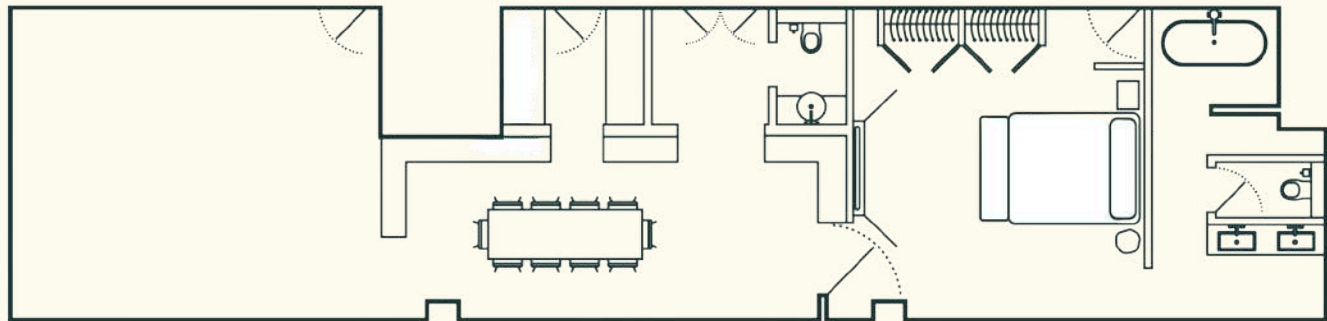
TWO QUEENS &  
LOOKOUT TWO QUEENS



CABIN SUITE



CLUB SUITE



TREETOP SUITE



# KING

Your favourite childhood memories—reimagined. With a cloud-soft King bed, eclectic upholstery, countless textures, and wide windows, view the world through a new lens from this cosy corner.

Avg Size: 173 sq. ft. 16 sq. m.



KING BED



2 PEOPLE



SKYLINE VIEW



RAIN SHOWER



HIGH FLOOR





# LOOKOUT KING

Feel like you're up in the trees in the Lookout King. Take in the best Manchester skyline views from your secret hideaway with a comfy King bed, countless textures and patterns, luminous natural light, and a curious collection of found objects.

Avg Size: 173 sq. ft. 16 sq. m.



KING BED



2 PEOPLE



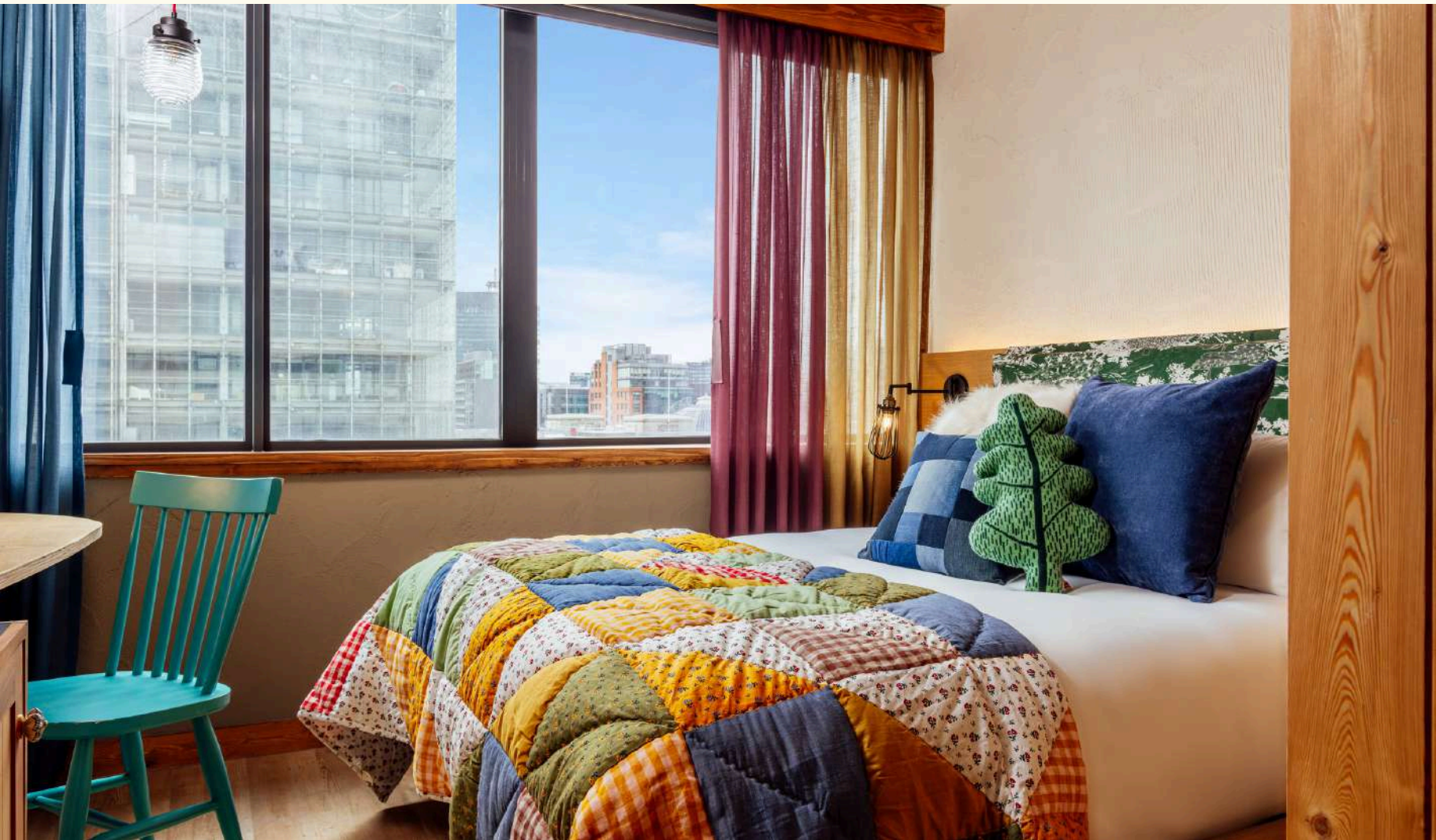
SKYLINE VIEW



RAIN SHOWER



HIGH FLOOR





# TWO QUEENS

Camp out in a den with two Queen beds and city views—from the bedroom and bathroom. You'll be reminded of life's simple pleasures with a hidden TV cabinet, shingles on the walls, and reclaimed teak tables.

Avg Size: 334 sq. ft. 31 sq. m.



QUEEN BEDS



4 PEOPLE



CITY VIEW



RAIN SHOWER





# LOOKOUT TWO QUEENS

Camp out in a den with two Queen beds and panoramic views of the Manchester Skyline —from the bedroom and bathroom. You'll be reminded of life's simple pleasures with a hidden TV cabinet, shingles on the walls, and reclaimed teak tables.

Avg Size: 334 sq. ft. 31 sq. m.



QUEEN BEDS



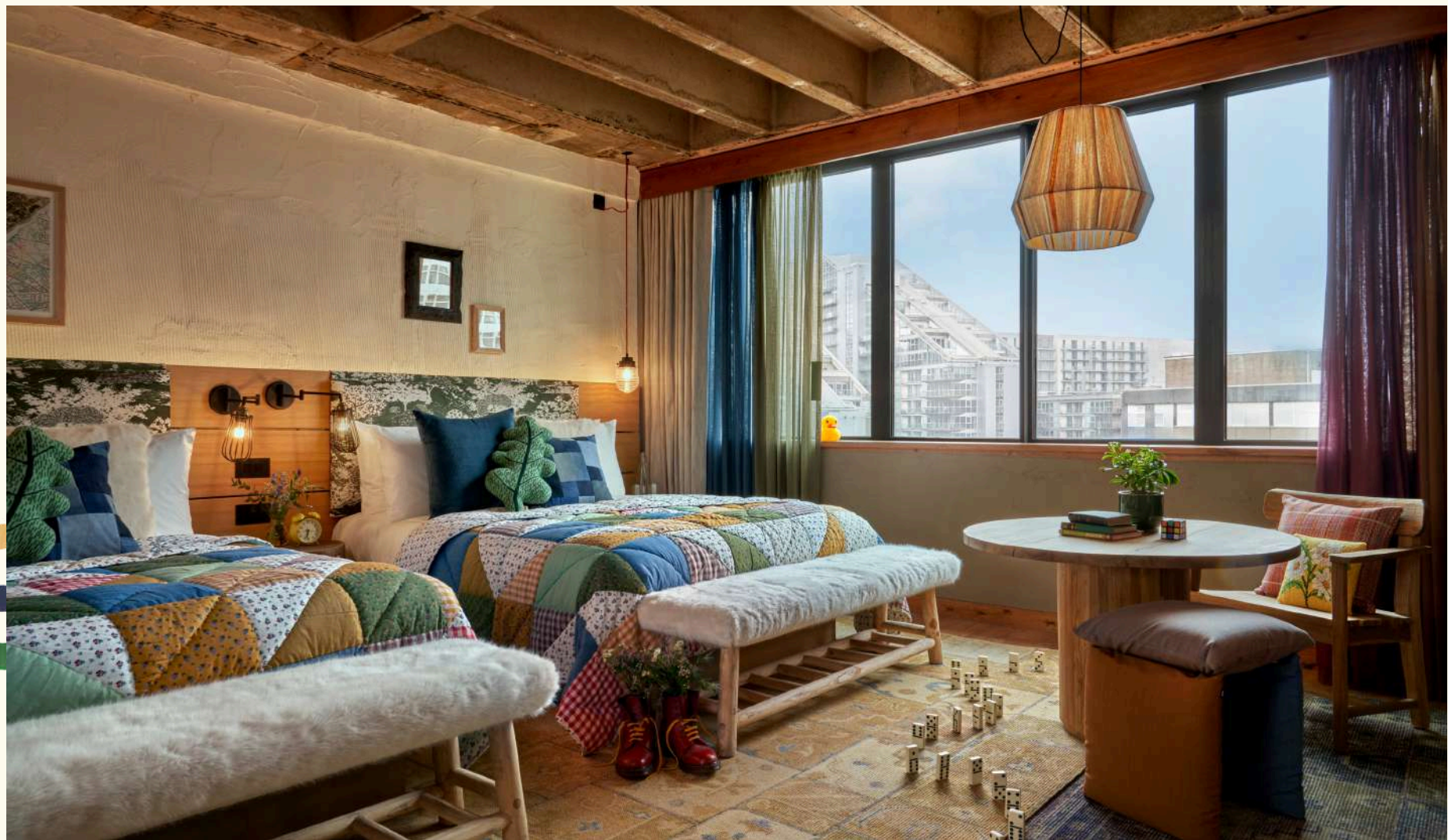
4 PEOPLE



CITY VIEW



RAIN SHOWER





# STUDIO SUITE

Settle into the Studio Suite, your carefully-curated and uniquely-refined home away from home. With a Super King bed, lounging sofa and plenty of natural light, it's the perfect city hideaway.

Avg Size: 337 sq. ft. 31 sq. m.



SUPER KING



3 PEOPLE



CITY VIEW



SOFABED



RAIN SHOWER



SEATING AREA



WORKSPACE





# LOOKOUT STUDIO SUITE

Settle into the Look Out Studio Suite, your carefully-curated and uniquely-refined home away from home. With a Super King bed, lounging sofa, and plenty of natural light, it's the perfect city hideaway with some of the best views of the Manchester skyline.

Avg Size: 345 sq. ft. 32 sq. m.



SUPER KING



3 PEOPLE



CITY VIEW



SOFABED



RAIN SHOWER



HIGH FLOOR



SEATING AREA



WORKSPACE







# GATHER

A stand-out spot in the heart of the city, Treehouse Manchester is the perfect backdrop for private events and parties of up to 400 people. thoughtful touches, and countless design details will make you feel like you're up in the trees, each space is sure to inspire connection, spark imagination, and dare you to dream bigger.



# EVENT & *Meeting Rooms*

Treehouse Hotel Manchester is where good times are timeless. From weddings, corporate events, and meetings, to any occasion that calls for a drink, a smile, and an excuse to linger longer, we've got you covered

7 spaces situated on the 1st floor:

- Willow
- Cedar
- Chestnut
- Walnut
- Acorn
- Bar & Lounge
- Flix Screening Den

Total Meeting Space: 655MÇ





# WILLOW

From bold ideas to unforgettable gatherings, Willow offers natural charm and the space to bring big visions to life.

With room to host over 400 seated guests, this airy, flexible venue is ideal for large-scale events, corporate functions, galas, and community celebrations. Need something more intimate?

Divide Willow into two smaller spaces, perfect for breakout sessions, private dinners, or creative collaborations.

445 SQ. M

WILLOW I - THEATRE

276 SEATS

WILLOW II - THEATRE

182 SEATS

WILLOW I & II - THEATRE

458 SEATS

WILLOW I - CABARET

128 SEATS

WILLOW II - CABARET

96 SEATS

WILLOW I & II - CABARET

240 SEATS

WILLOW I - CLASSROOM

60 SEATS

WILLOW II - CLASSROOM

40 SEATS

WILLOW I & II - CLASSROOM

100 SEATS

WILLOW I - ROUND TABLE

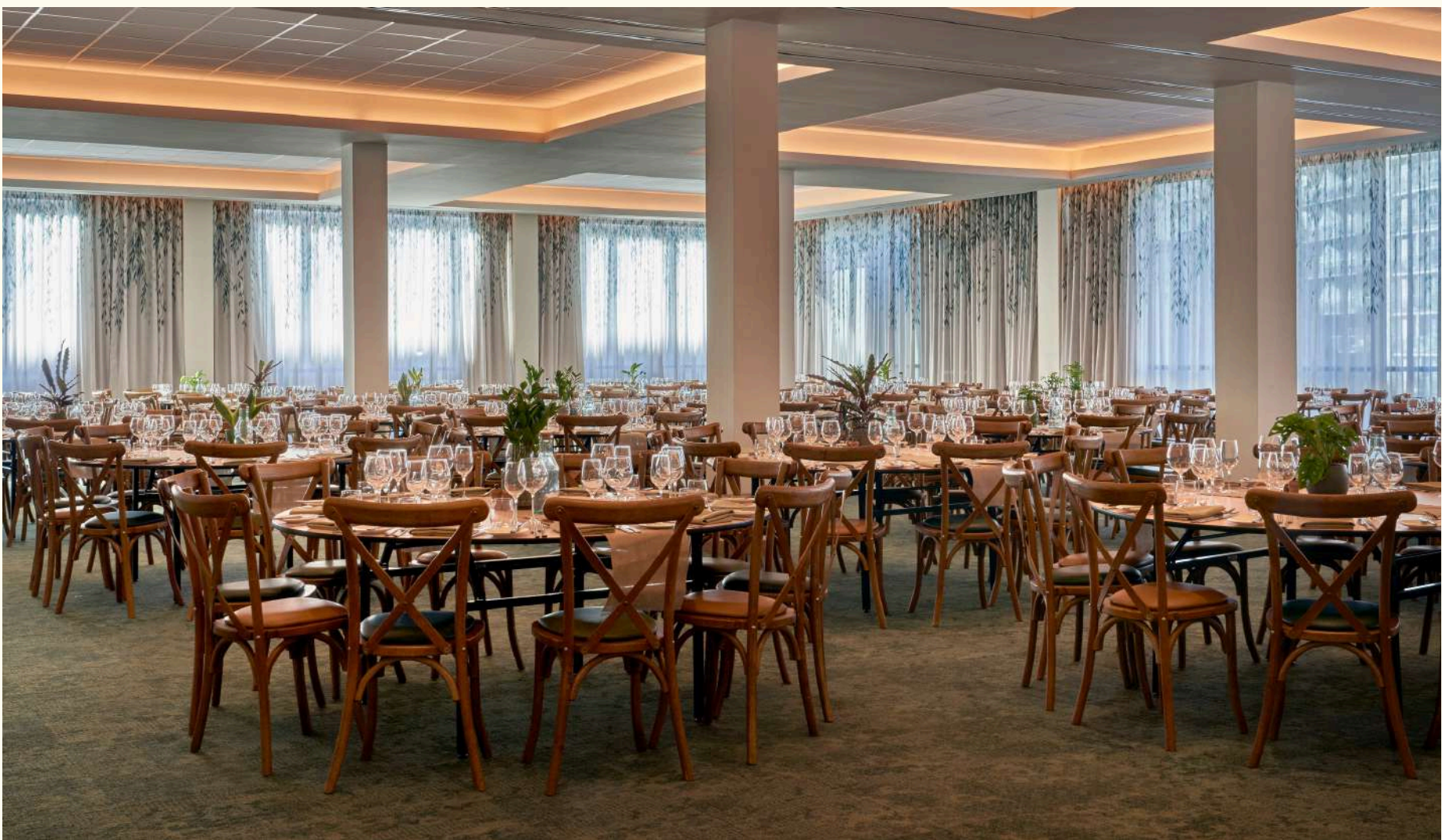
210 SEATS

WILLOW II - ROUND TABLE

120 SEATS

WILLOW I & II - ROUND TABLE

350 SEATS





# CEDAR

Cedar is a light-filled event room, where floor-to-ceiling windows frame life on Deansgate and offer a glimpse of the iconic Treehouse “feature tree” below. Seamlessly connected to a lively pre-function bar area, Cedar is perfectly suited for meetings, breakout sessions, receptions, or networking drinks in a space that blends productivity with playfulness.

87 SQ. M

CABARET

46 SEATS

ROUND TABLE

60 SEATS

THEATRE STYLE

80 SEATS





# CHESTNUT

Chestnut is a warm, intimate space, tucked just off the main event lobby through elegant double doors. Perfect for private dining or round table gatherings, it offers a cosy atmosphere with natural light and a touch of Treehouse charm.

**42.8 SQ. M**

**16 SEATS**





# WALNUT

Walnut is a welcoming, versatile event space at Treehouse Hotel Manchester, offering a warm, natural ambiance with modern amenities. Ideal for private dining or small gatherings, it accommodates up to 12 guests.

**29 SQ. M**

**12 SEATS**





# ACORN

Acorn is the smallest of Treehouse Hotel Manchester's meeting rooms, designed to offer a warm and focused environment. With nature-inspired décor and modern amenities, it's perfect for private meetings, brainstorming sessions, and creative gatherings.

**14 SQ. M**

**8 SEATS**





# FLIX *Screening Den*

Enjoy the latest state-of-the-art sound & projection equipment for a fully immersive audio-visual experience.

## PROJECTION

4K RGB Barco Laser projector Dolby IMS3000 with 10TB NAS storage.

## AUDIO

Dolby Atmos with bi-amplified audio and 28 surround channels. Qsys control with QSC speakers and 44 channels of amplifiers.

## SCREEN

A 5-meter-wide image on a matt white screen surface.

## SEATS

43 x Premium seats with USB sockets.  
1 x Wheelchair access point.

## INPUT SOURCES

Multi-format presentation switch supporting HDMI matrix, DVDs, & streaming services.

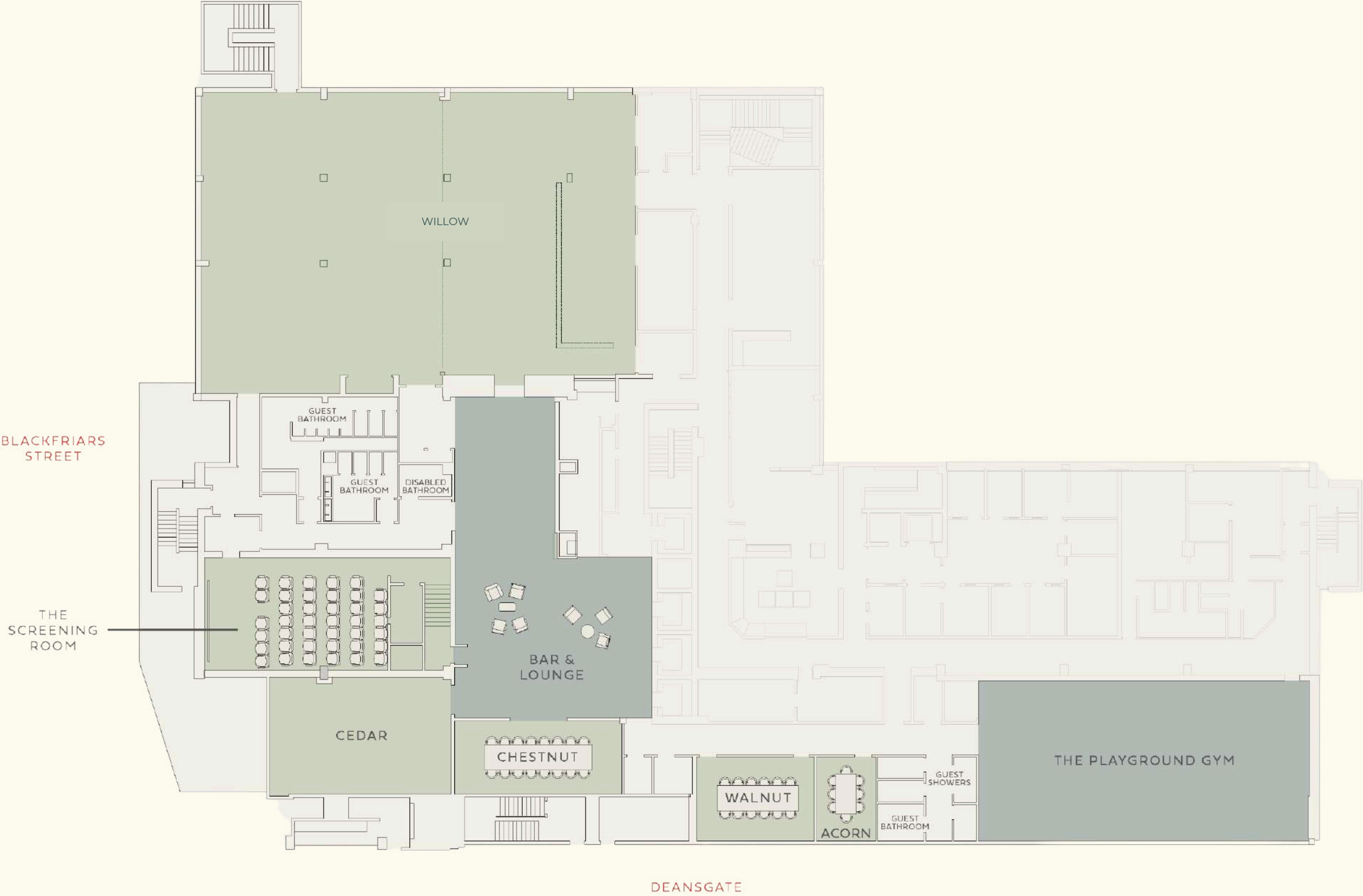
## ACCESSIBILITY

2 x Dolby Accessibility Solutions, integrating hearing impaired amplified audio, visually impaired narrative audio, & closed captions, in a dedicated receiver with touchscreen capability.  
4 x Infra-Red headphones for assisted listening.





EVENT SPACES *First Floor*





# SEASONAL EVENT MENUS

*by Mary-Ellen McTague*

Fuel your events with local farm-to-table fare curated by Mary-Ellen McTague. From traditional breakfasts and baked goods to delicious lunch and dinner dishes—enjoy every bite knowing it boasts the freshest ingredients, picked-to-order from nearby organic and regenerative farms.

Mary-Ellen McTague, has over 20 years' experience in hospitality, spanning multiple sizes and styles of operation. Mary-Ellen's outstanding career began in the then-Michelin starred Sharrow Bay Country House hotel, followed by four years spent working with Heston Blumenthal, firstly as Sous Chef at the 3 Michelin-starred Fat Duck, then as Research and Development Chef, working on historical food for Blumenthal's Hind's Head and Fat Duck menus.

A true pioneer in sustainable kitchen practises over the last six years, Mary-Ellen brings this ethos of sustainability in modern cuisine to the banqueting spaces. Fundamental to this will be a zero-waste focus and her modern twist on traditional cooking techniques. The menus will change seasonally, with a focus on utilising produce sourced from local farms.





# EAT & Drink

## PIP

BY MARY-ELLEN MCTAGUE

Modern British cuisine re-imagined with fresh seasonal produce from sustainable local growers.

## SISTER MOON (OPENING 2026)

BY SAM GRAINGER

Elevated Southeast Asian menu, with a fusion of European ingredients & culinary techniques.

## THE NEST (OPENING 2026)

14TH FLOOR BAR

Panoramic rooftop bar with an eclectic cocktail menu, & unparalleled views of the city

## THE HIDEOUT (OPENING 2026)

15TH FLOOR LOUNGE

Panoramic rooftop bar with an eclectic cocktail menu, & unparalleled views of the city





# PIP

## *Restaurant & Bar*

At Pip, Mary-Ellen McTague and her team reimagine local culinary heritage through seasonal, low-waste menus prepared using the bountiful produce of the North West.

Pip's hyper-seasonal cocktails are created in synergy with the kitchen to use spent ingredients to complement the food, served alongside a low-intervention wine offering.

The space itself feels as inviting as the menus, with warm woods, ambient lighting, and communal tables that encourage conversation.

Take over Pip for the ultimate private event. Enjoy exclusive access to our vibrant restaurant and bar. A full buyout allows for flexible layouts, and an unforgettable experience.

### EVENTS AT PIP CAPACITIES

100 people seated

150 people standing





# CHEF PARTNERS

Treehouse Manchester is working with a stellar line-up of the North West's highly regarded chefs and restaurateurs, Mary-ellen McTague, Sam Grainger, Luke Cowdrey and Justin Crawford across the F&B offerings.



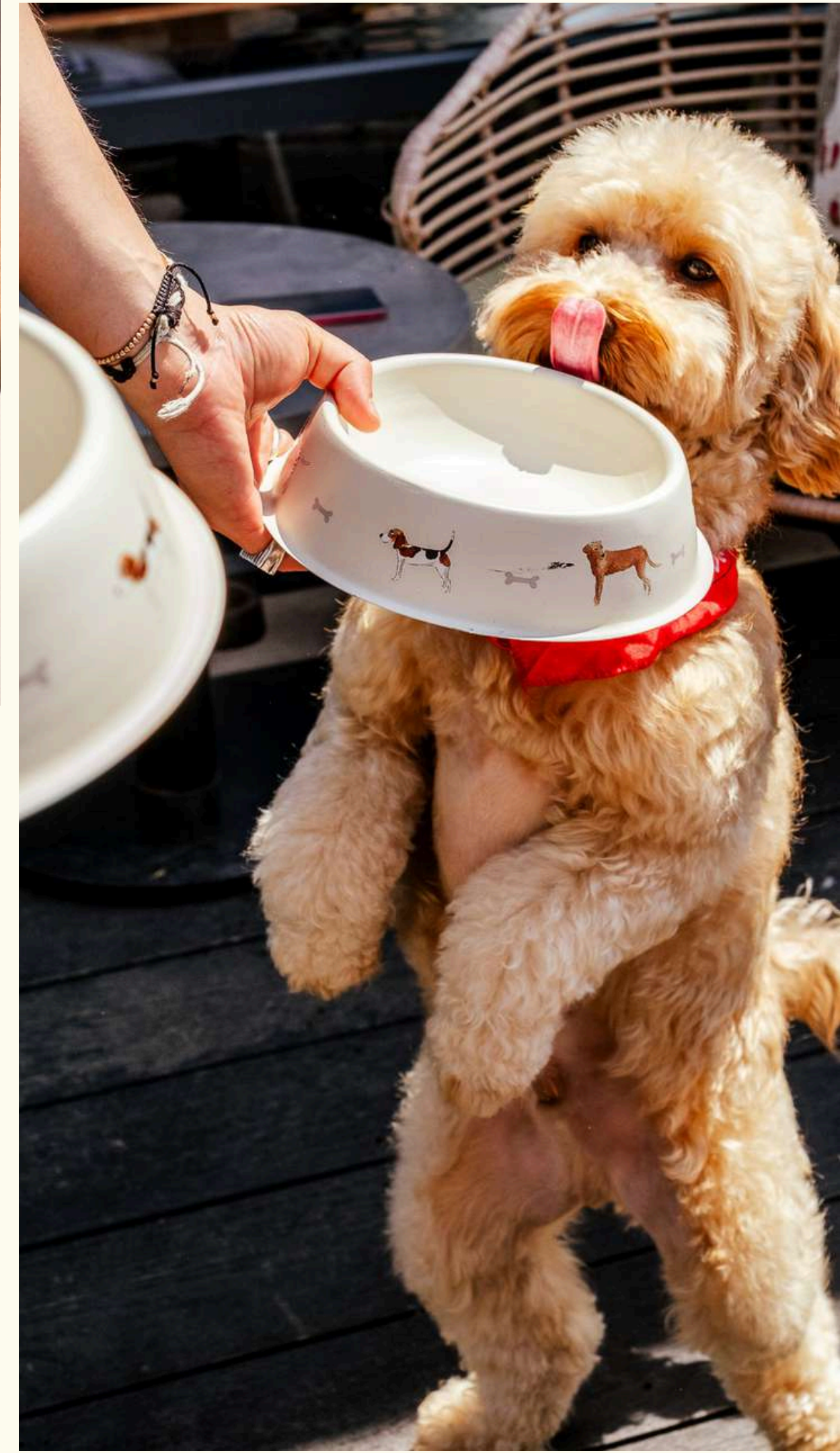


# PLAY

Amenities and facilities:  
Playground Gym, Padel at The  
Pollen Club, Knick Knacks  
retail, meeting rooms, Flix  
screening den, variety of  
rooms & suite options

Our Treehouse crew of Fun Finders will  
be ready to let you in on their best  
kept Manchester secrets. Ask for their  
favourite spots to dine, drink, shop,  
and explore the city.

Four-legged friends are welcome too.  
We know dogs are family too. That's  
why your four-legged co-pilot stays  
free in our hotel rooms. No pet fees.  
No fuss. Just snoozes, sniffs, and a  
little mischief along the way.





# PAD&L

## *at The Pollen Club*

Rally on the Padel Courts at The Pollen Club next to Treehouse Manchester. The Pollen Club offers two state-of-the-art courts under a waterproof canopy, shielding players from Manchester's infamous weather ensuring you get non-stop court action.





# WORKOUT

## *at The Playground*

Stretch, sweat, repeat. Our gym is your go-to for feel-good movement, whether you're chasing personal bests or just fancy a quick stretch. Packed with top-notch equipment, it's a space to move your way. Newbie or seasoned pro, everyone's welcome to get stuck in.



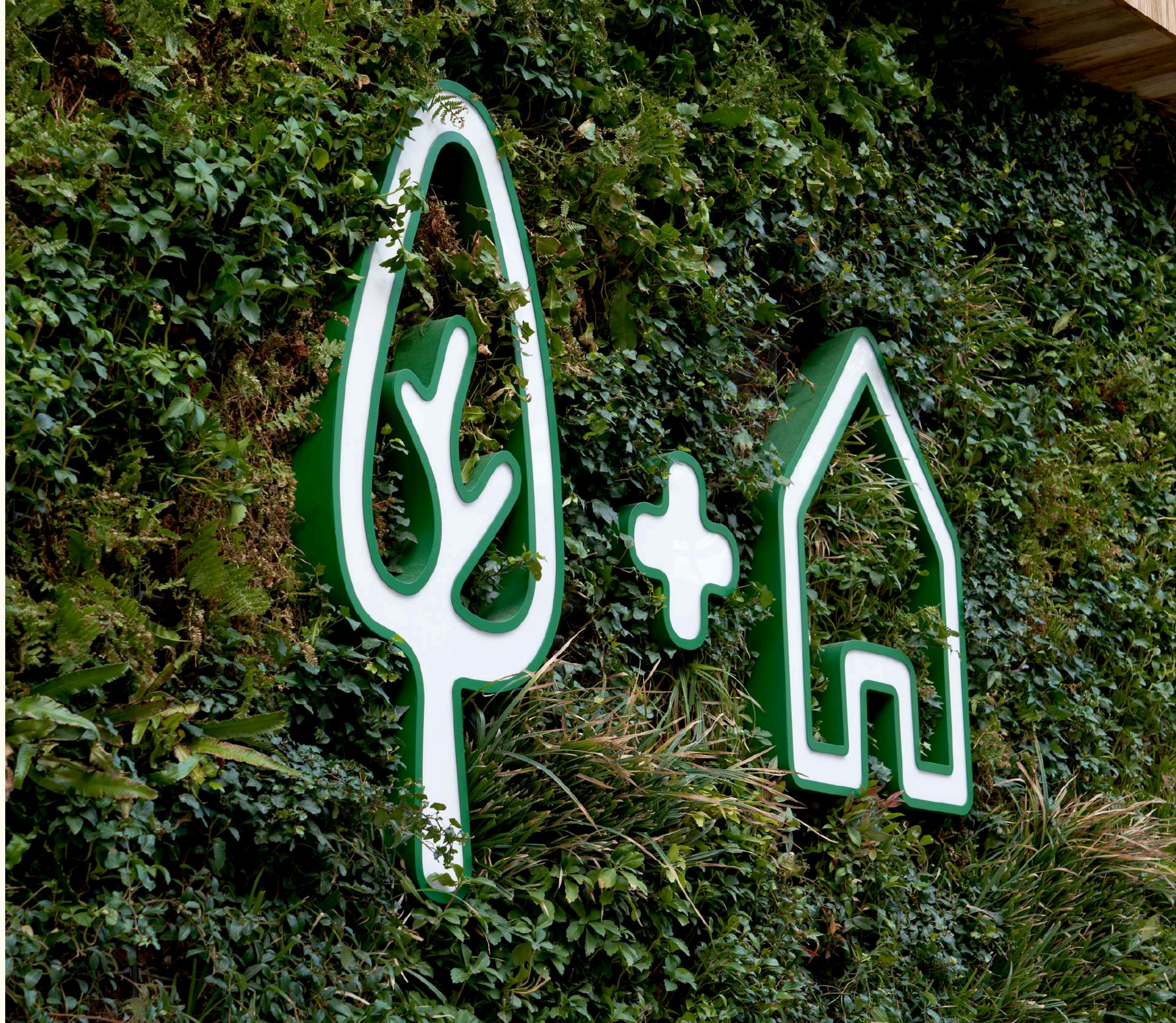


# SUSTAINABILITY AT *Treehouse Manchester*

We know our guests and travellers are thinking about sustainability and that it is important to them. Treehouse Hotels knows we have a responsibility to respect nature and have a responsible mindset.

From conscious construction of our hotel, recycling and repurposing materials, including giving new life to decorative pieces by finding found objects locally, to our ethically sourced supplies, and responsible consumption, we know our choices matter.

Guests can enjoy our Treehouse honey, harvested from 9 beehives on the hotel's roof, made by 180k bees, who are cared for by the Volition community volunteer group from Manchester Cathedral.





# OUR TREEHOUSE *Family*

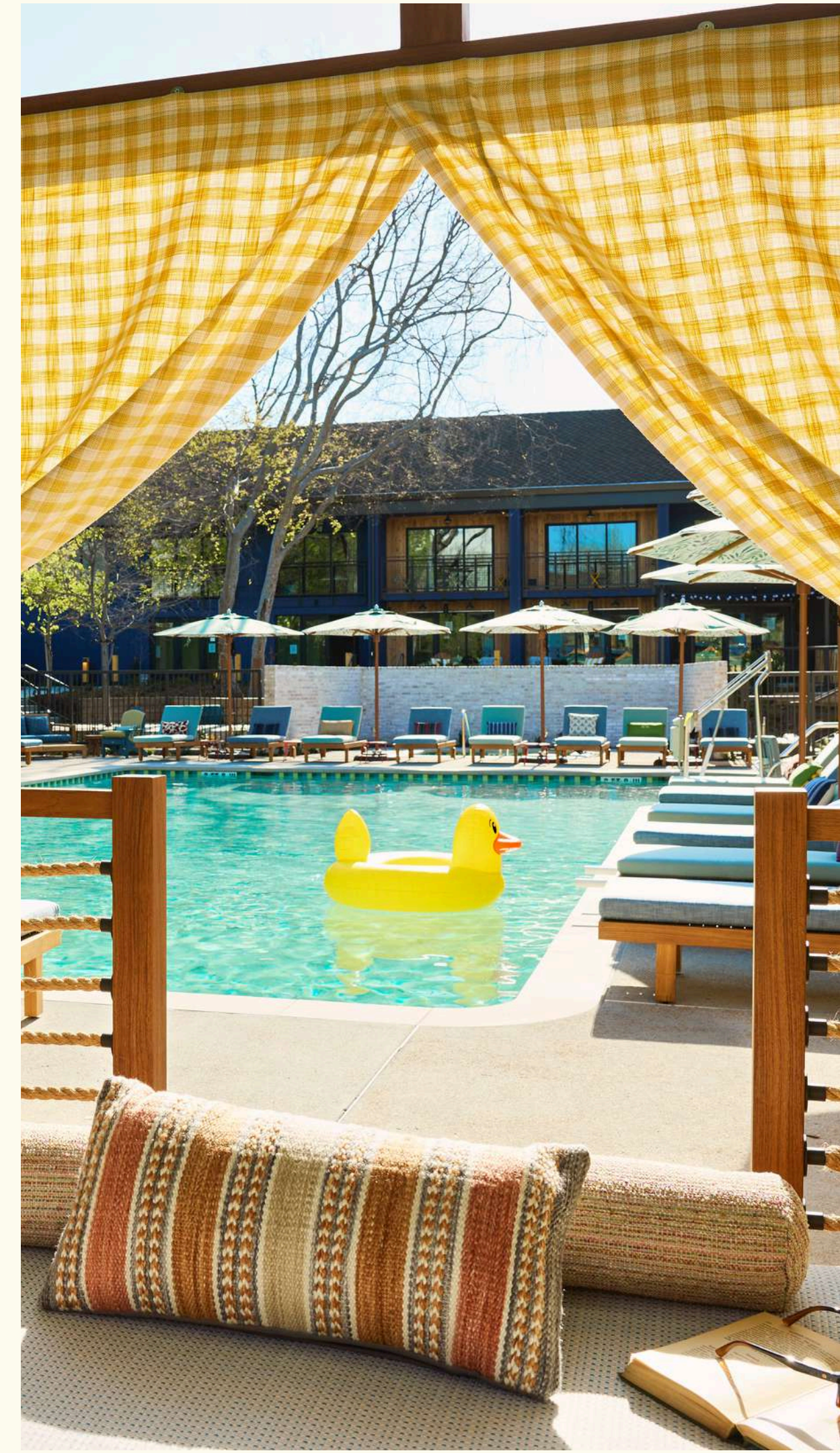
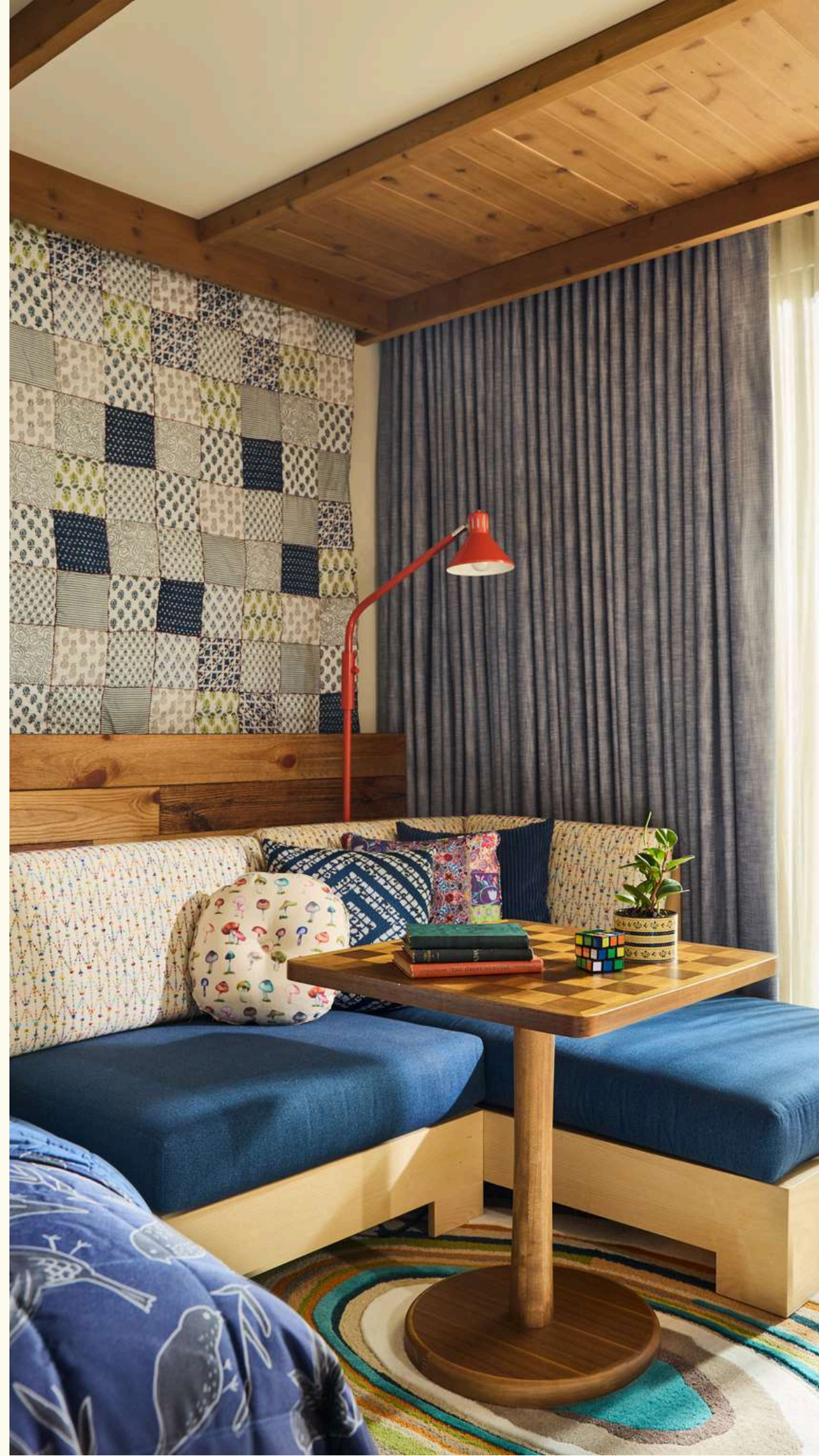
TREEHOUSE HOTEL  
SILICON VALLEY  
OPENED MARCH 2025

Signature Restaurant by  
award-winning chef Stephanie  
Izard, Valley Goat

Beer Garden, your open-air  
hangout

Backyard Café, a cozy coffee  
shop that feels like a real  
Treehouse

7,800 sq. ft of flexible  
indoor and outdoor meeting  
and event space





# OUR TREEHOUSE *Family*

TREEHOUSE HOTEL LONDON  
OPENED NOVEMBER 2019

Located in London's vibrant  
Marylebone neighbourhood.

95 rooms (starting at 23m<sup>2</sup>);  
including 12 suites

15th Floor Restaurant:  
Madera at Treehouse London

16th Floor Rooftop Lounge:  
The Nest









treehouse  
MANCHESTER

THMA-SALES@TREEHOUSEHOTELS.COM  
TREEHOUSEHOTELS.COM/MANCHESTER  
@STAYTREEHOUSE @PIPMCR

