





ABOUT TREEHOUSE HOTELS

Treehouse Hotels was founded on the ideas that inspire a child to build a treehouse. Adventure, independence, cosy spaces and repurposing crafty things are what make a place warm and special. That's why every Treehouse Hotel celebrates found objects, nostalgic tunes, handmade details and locally sourced treats.



TREEHOUSE HOTEL *Manchester*

Treehouse Manchester is the second hotel within the Treehouse Hotels brand and second hotel for Starwood Hotels in the UK. Within our Treehouse, every detail is imagined through the carefree, optimistic lens of childhood and balanced with a distinctly modern sensibility. With attentive service, locally inspired fun amenities, thoughtful programming, and several food & beverage offerings, we are about playfulness and freedom.

Discover More

THMC-sales@treehousehotels.com

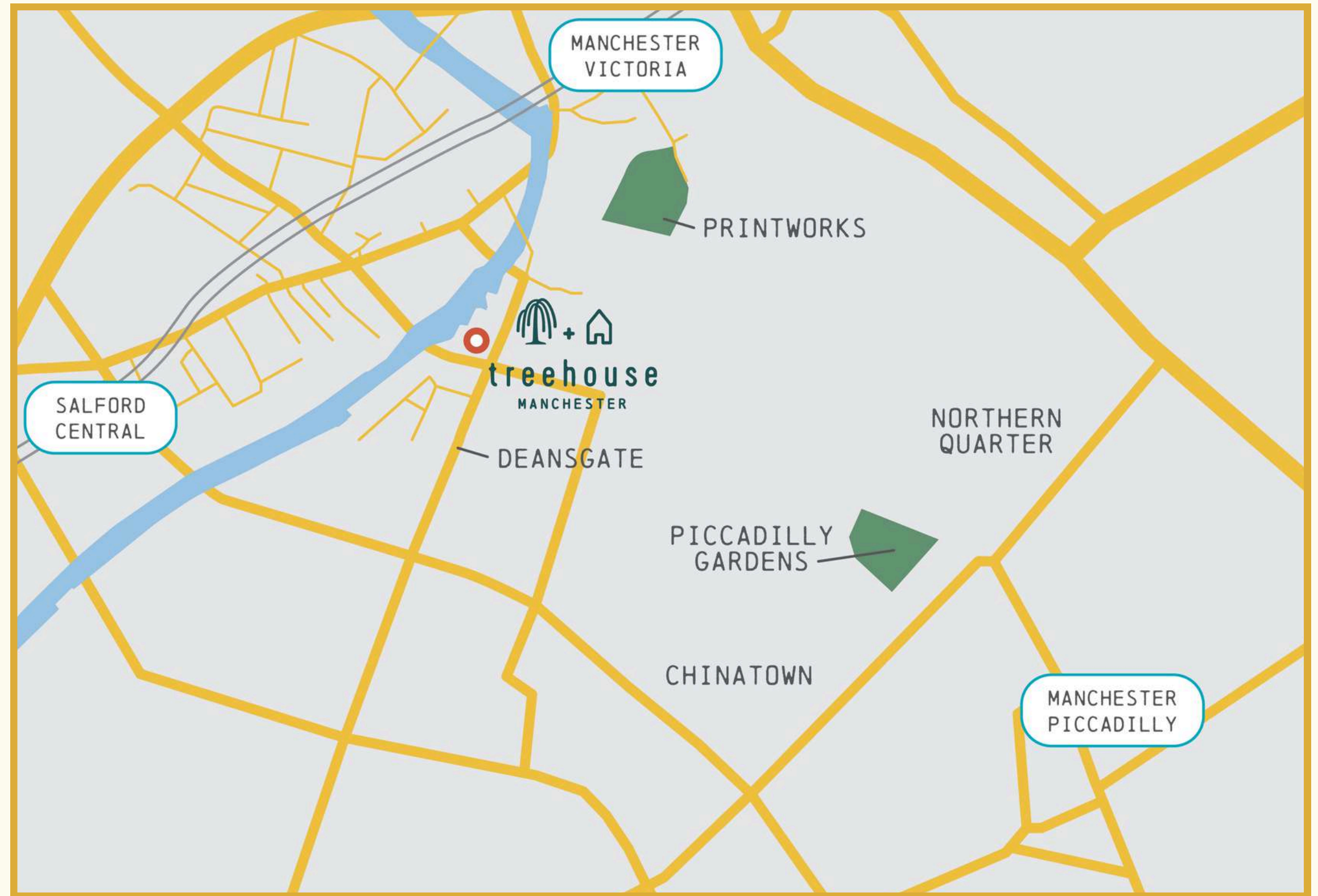
www.treehousehotels.com/manchester



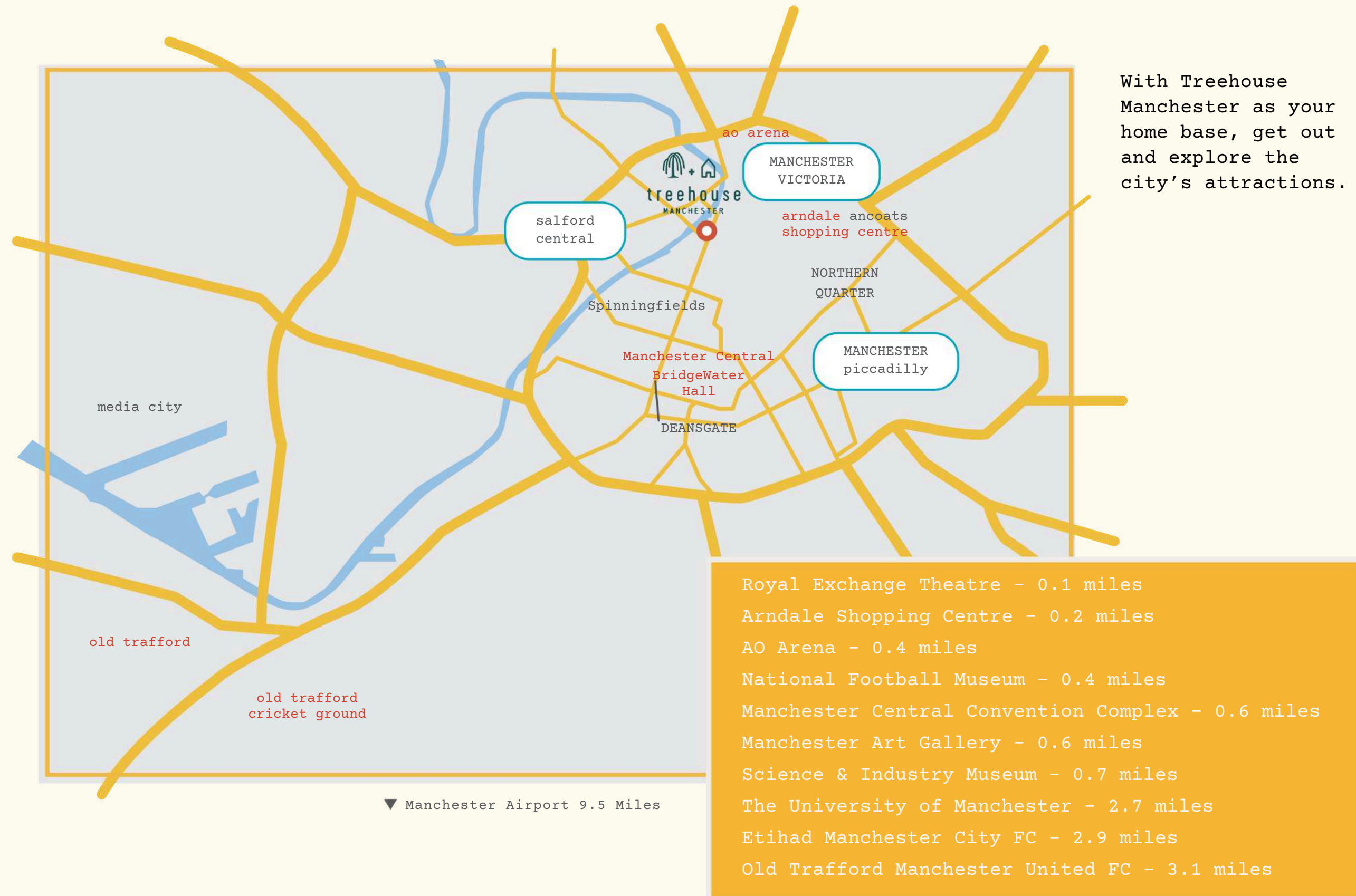
LOCATION

Traveling to Treehouse Manchester

International transport links
from Manchester Airport, 30
minutes from Treehouse
Manchester and a 2-hour train
journey to London Euston.



MORE OF MANCHESTER





SLEEP

Climb up and cosy into your nature nook
at Treehouse Manchester, where each
guest room boasts its own quirky flair
and perfectly imperfect charm.

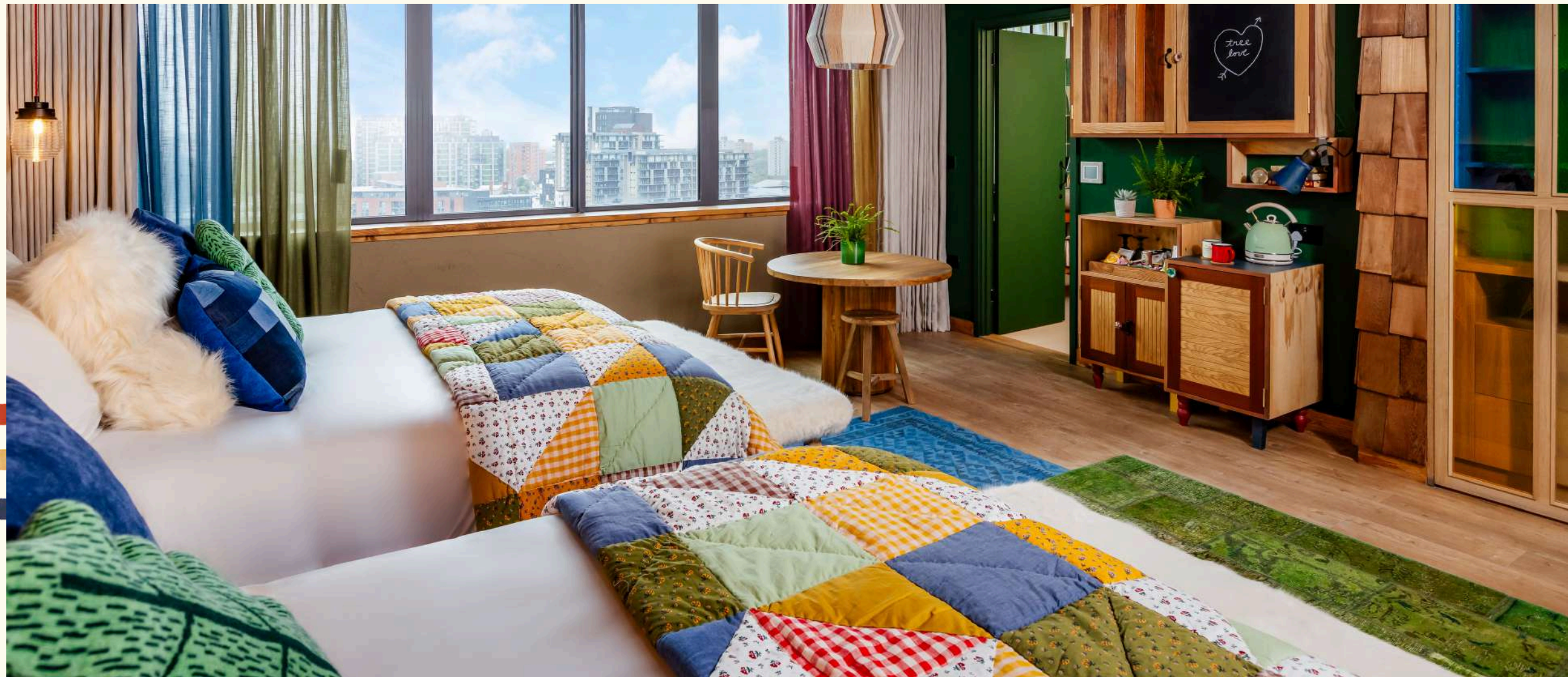
GUEST ROOMS

Our rooms are cosy, welcoming and colourful, just like your childhood clubhouse.

Rooms: 224 w/interconnecting rooms

Suites: 14 w/1 Penthouse treetop Suite

Panoramic windows, tech-ready rooms, high speed WiFi



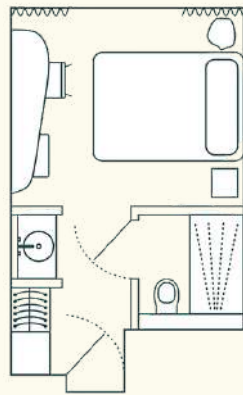
ROOM *Categories*

224 ROOMS

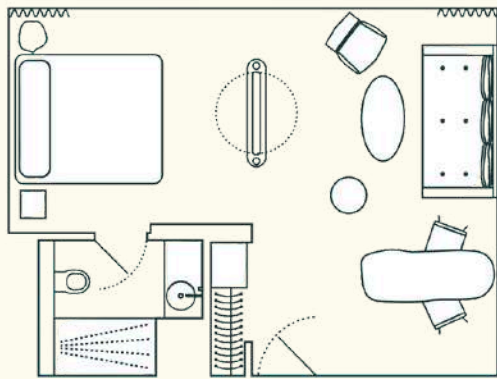
- 43 King - 16m²
- 40 Lookout King - 16m²
- 43 Studio suite - 31m²
- 56 Lookout studio suite - 32M²
- 15 Two queens - 31M²
- 18 Lookout two queens - 31M²
- 4 Club suite - 49M²
- 4 Cabin suite - 65M²
- 1 Treetop suite - 100m²
- 1 Connecting kings - 55M²
- 4 Connecting king & lookout king - 55M²
- 1 Connecting studio & lookout king - 57M²
- 3 Connecting lookout studio & lookout king - 57m²
- 3 Connecting studio suites - 64M²
- 3 Connecting lookout studio suites - 64M²



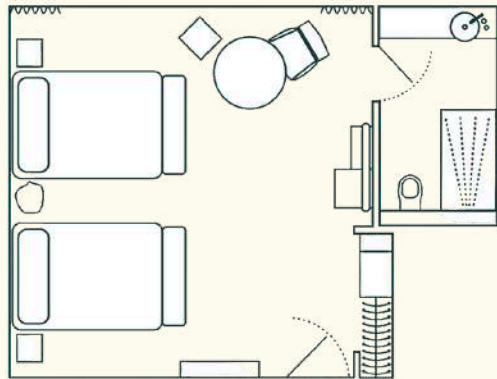
ROOM LAYOUTS



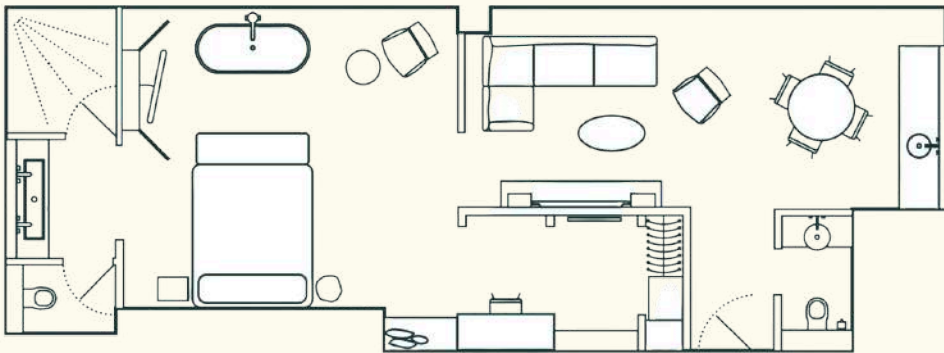
KING & LOOKOUT KING



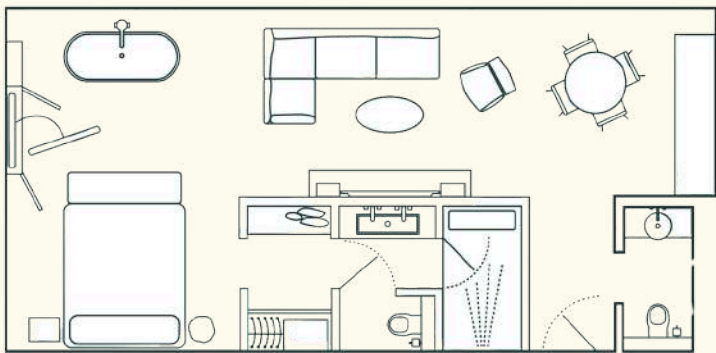
STUDIO SUITE &
LOOKOUT STUDIO SUITE



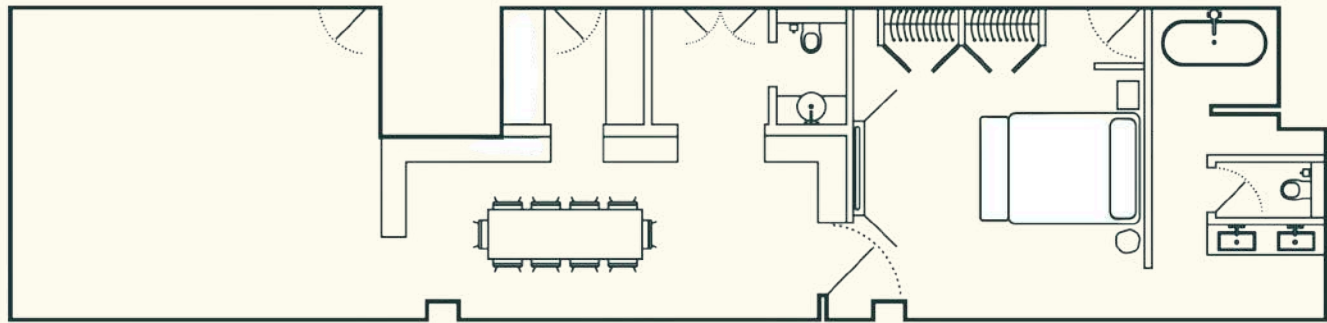
TWO QUEENS &
LOOKOUT TWO QUEENS



CABIN SUITE



CLUB SUITE

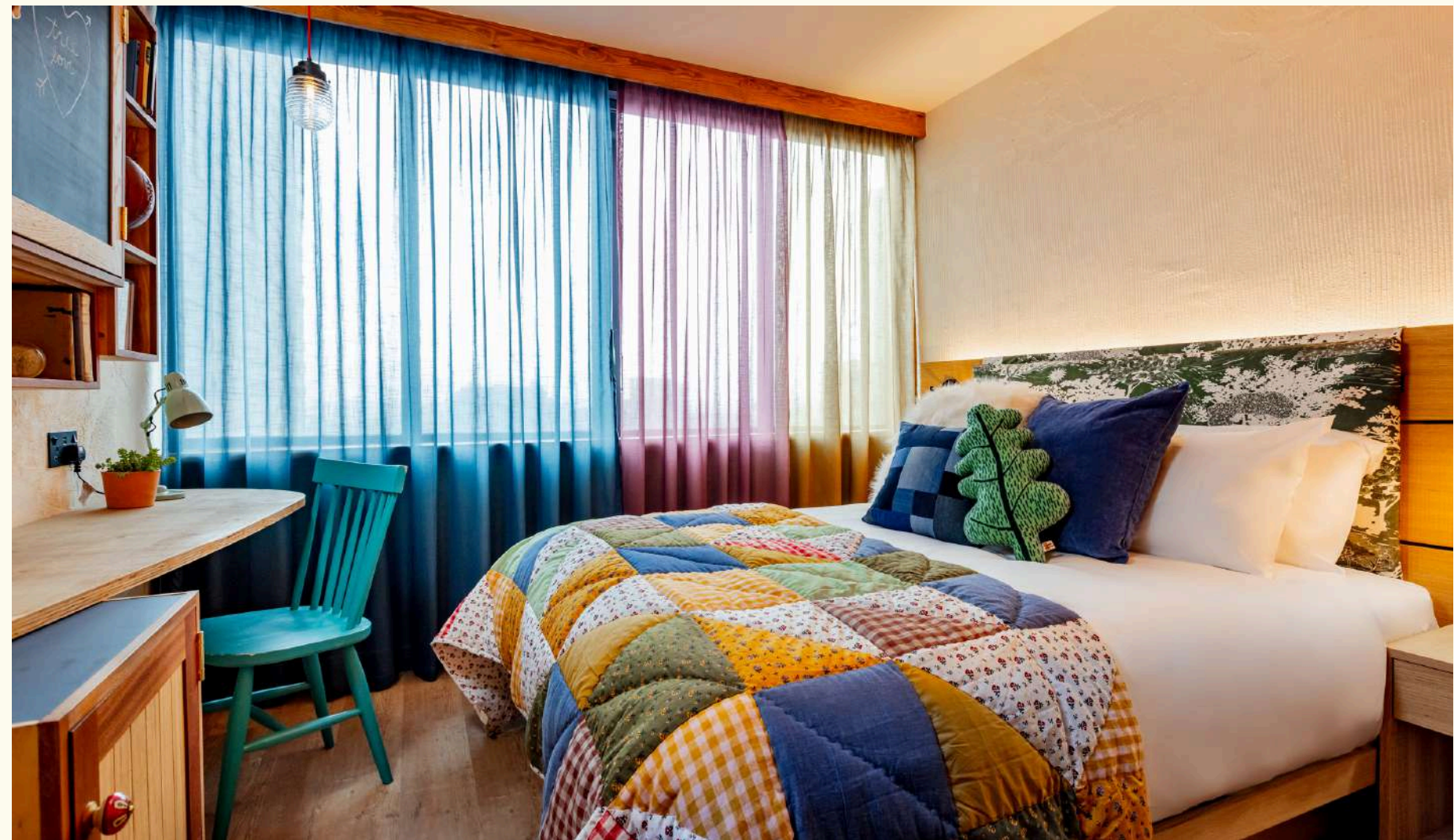


TREETOP SUITE

KING

Your favourite childhood memories—reimagined. With a cloud-soft King bed, eclectic upholstery, countless textures, and wide windows, view the world through a new lens from this cosy corner.

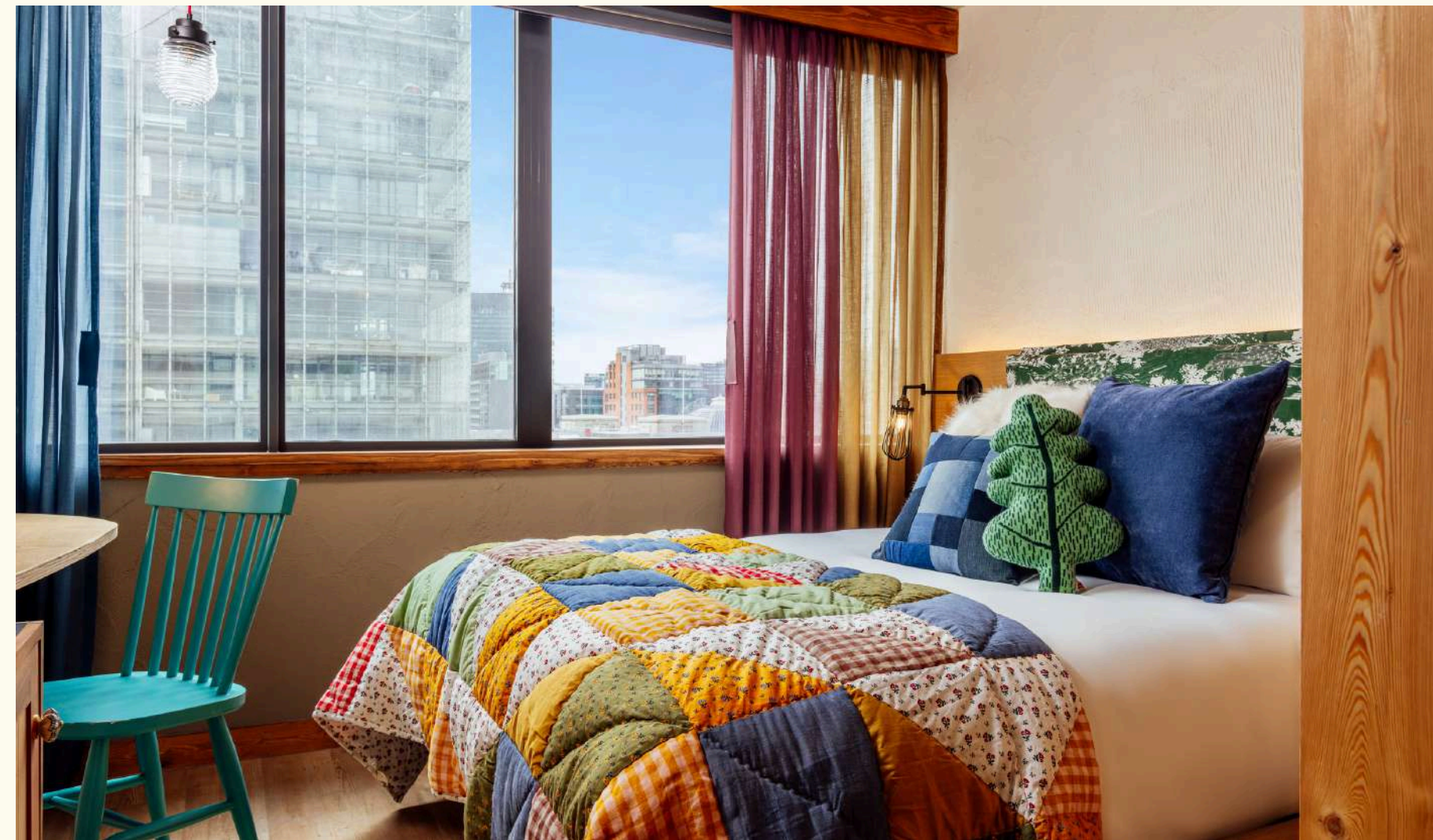
Avg Size: 173 sq. ft. 16 sq. m.



LOOKOUT KING

Feel like you're up in the trees in the Lookout King. Take in the best Manchester skyline views from your secret hideaway with a comfy King bed, countless textures and patterns, luminous natural light, and a curious collection of found objects.

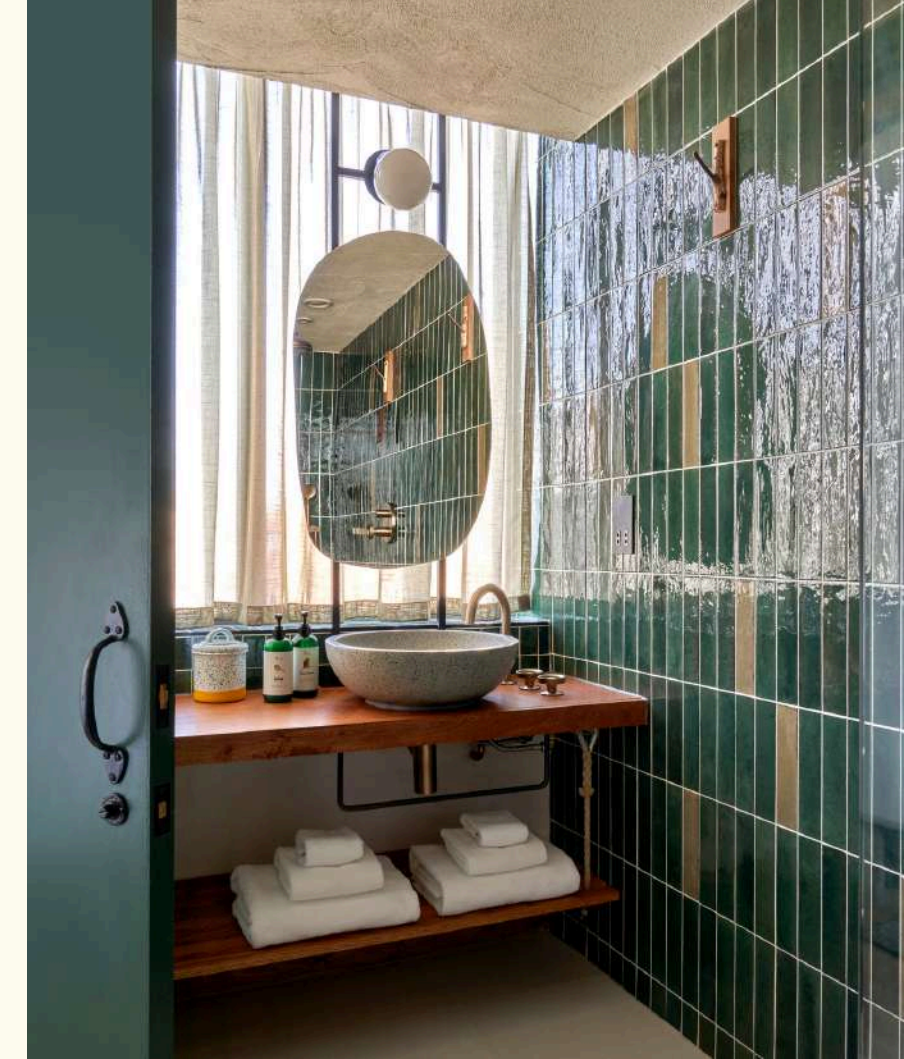
Avg Size: 173 sq. ft. 16 sq. m.



TWO QUEENS

Camp out in a den with two Queen beds and city views—from the bedroom and bathroom. You'll be reminded of life's simple pleasures with a hidden TV cabinet, shingles on the walls, and reclaimed teak tables.

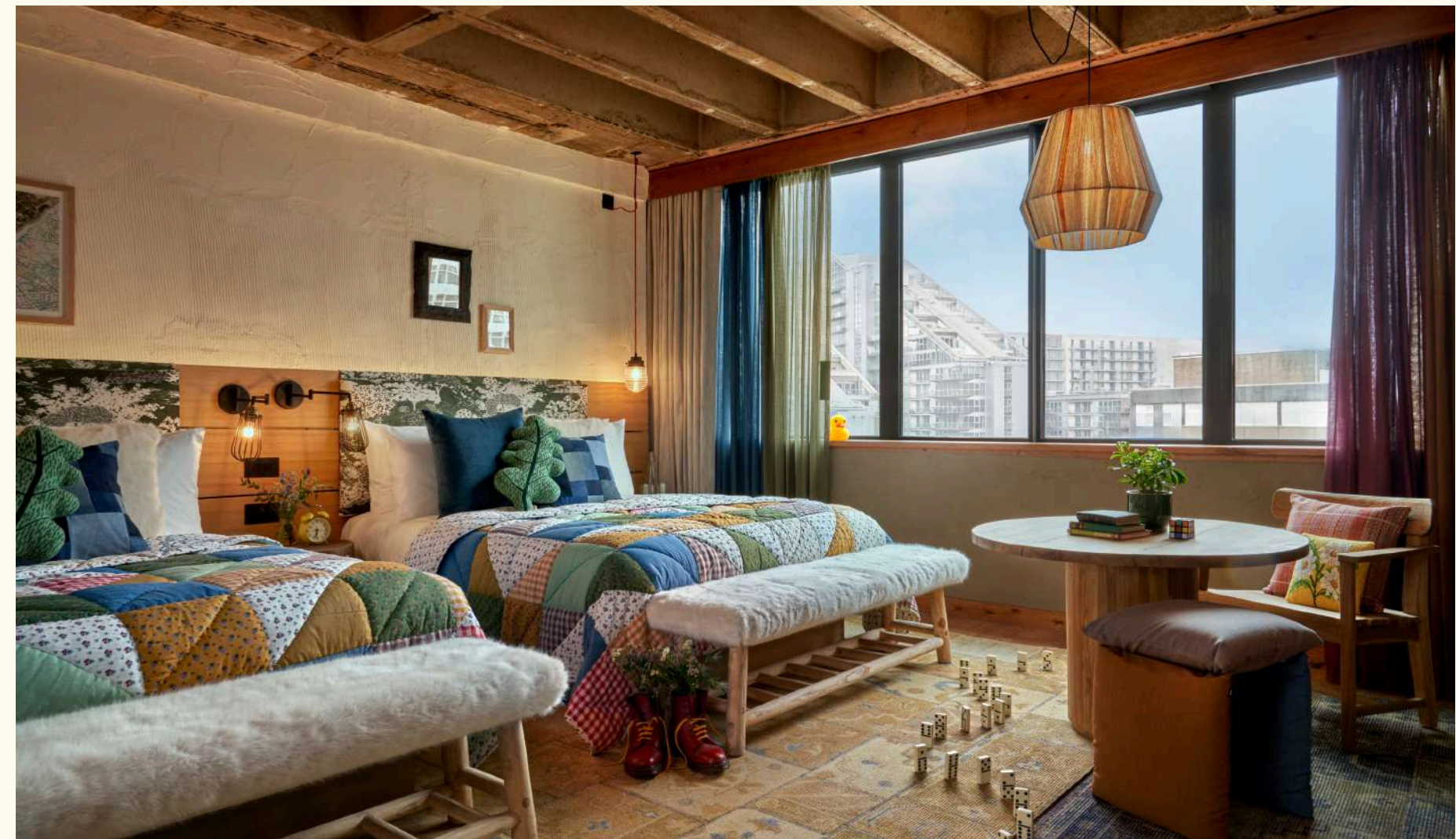
Avg Size: 334 sq. ft. 31 sq. m.



LOOKOUT TWO QUEENS

Camp out in a den with two Queen beds and panoramic views of the Manchester Skyline —from the bedroom and bathroom. You'll be reminded of life's simple pleasures with a hidden TV cabinet, shingles on the walls, and reclaimed teak tables.

Avg Size: 334 sq. ft. 31 sq. m.



STUDIO SUITE

Settle into the Studio Suite, your carefully-curated and uniquely-refined home away from home. With a Super King bed, lounging sofa and plenty of natural light, it's the perfect city hideaway.

Avg Size: 337 sq. ft. 31 sq. m.



SUPER KING



3 PEOPLE



CITY VIEW



SOFABED



RAIN SHOWER



SEATING AREA



WORKSPACE

LOOKOUT STUDIO SUITE

Settle into the Look Out Studio Suite, your carefully-curated and uniquely-refined home away from home. With a Super King bed, lounging sofa, and plenty of natural light, it's the perfect city hideaway with some of the best views of the Manchester skyline.

Avg Size: 345 sq. ft. 32 sq. m.



SUPER KING



3 PEOPLE



CITY VIEW



SOFABED



RAIN SHOWER



HIGH FLOOR



SEATING AREA



WORKSPACE



GATHER

A stand-out spot in the heart of the city, Treehouse Manchester is the perfect backdrop for private events and parties of up to 400 people. thoughtful touches, and countless design details will make you feel like you're up in the trees, each space is sure to inspire connection, spark imagination, and dare you to dream bigger.

EVENT AND *Meeting Rooms*

7 spaces situated on the 1st floor:

- Willow Room
- Cedar Room
- Chestnut Room
- Walnut Room
- Acorn Room
- Bar & Lounge
- Flix Screening Den

Total Meeting Space: 655MÇ



FLIX *Screening Den*

Enjoy the latest state-of-the-art sound & projection equipment for a fully immersive audio-visual experience.

PROJECTION

4K RGB Barco Laser projector Dolby IMS3000 with 10TB NAS storage.

AUDIO

Dolby Atmos with bi-amplified audio and 28 surround channels. Qsys control with QSC speakers and 44 channels of amplifiers.

SCREEN

A 5-meter-wide image on a matt white screen surface.

SEATS

43 x Premium seats with USB sockets.
1 x Wheelchair access point.

INPUT SOURCES

Multi-format presentation switch supporting HDMI matrix, DVDs, & streaming services.

ACCESSIBILITY

2 x Dolby Accessibility Solutions, integrating hearing impaired amplified audio, visually impaired narrative audio, & closed captions, in a dedicated receiver with touchscreen capability.
4 x Infra-Red headphones for assisted listening.



WILLOW

the latest state-of-the-art sound & projection equipment for a fully immersive audio-visual experience.

PROJECTION

4K RGB Barco Laser projector Dolby IMS3000 with 10TB NAS storage.

AUDIO

Dolby Atmos with bi-amplified audio and 28 surround channels. Qsys control with QSC speakers and 44 channels of amplifiers.

SCREEN

A 5-meter-wide image on a matt white screen surface.

SEATS

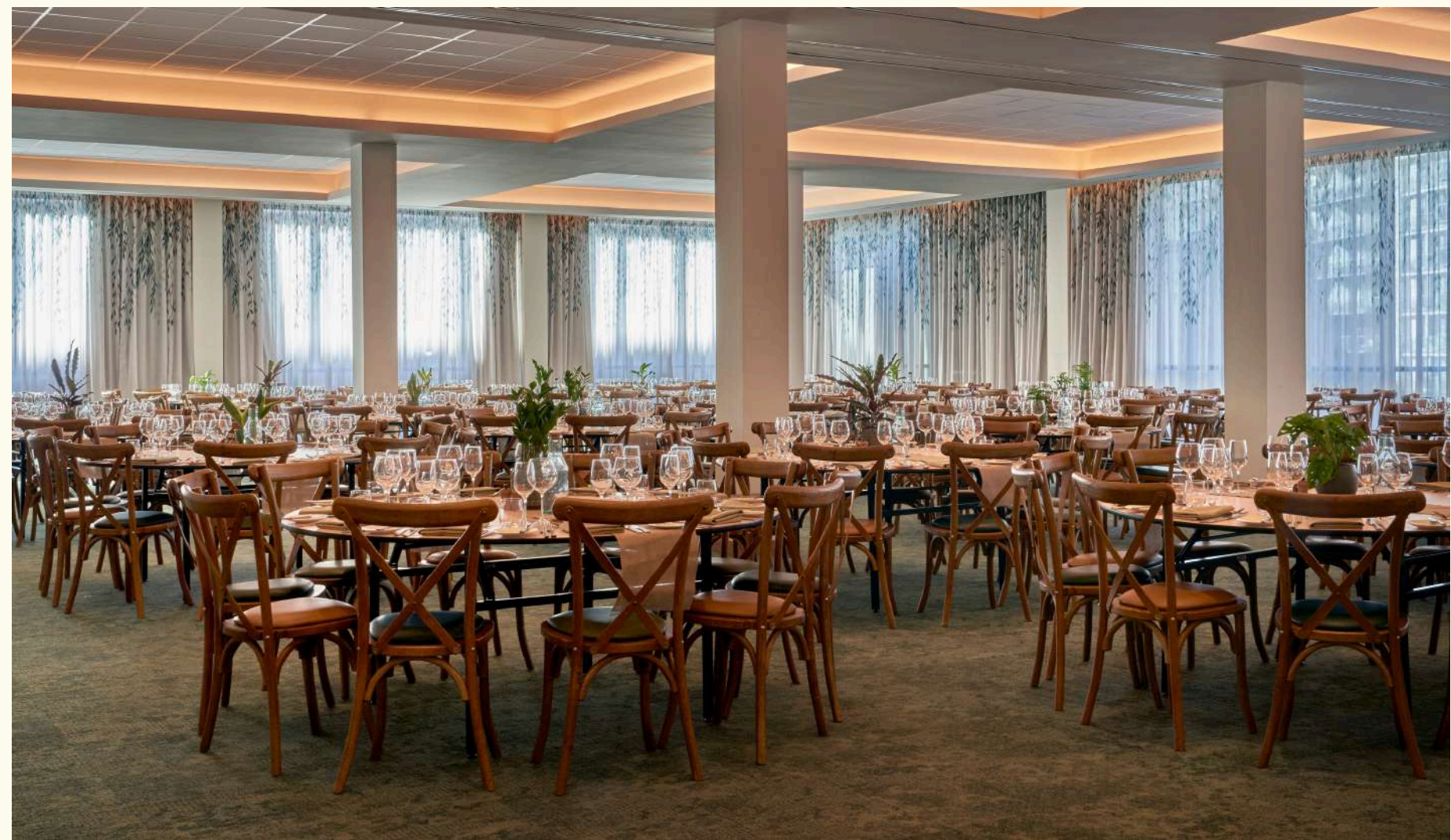
43 x Premium seats with USB sockets.
1 x Wheelchair access point.

INPUT SOURCES

Multi-format presentation switch supporting HDMI matrix, DVDs, & streaming services.

ACCESSIBILITY

2 x Dolby Accessibility Solutions, integrating hearing impaired amplified audio, visually impaired narrative audio, & closed captions, in a dedicated receiver with touchscreen capability.
4 x Infra-Red headphones for assisted listening.



CEDAR

the latest state-of-the-art sound & projection equipment for a fully immersive audio-visual experience.

PROJECTION

4K RGB Barco Laser projector Dolby IMS3000 with 10TB NAS storage.

AUDIO

Dolby Atmos with bi-amplified audio and 28 surround channels. Qsys control with QSC speakers and 44 channels of amplifiers.

SCREEN

A 5-meter-wide image on a matt white screen surface.

SEATS

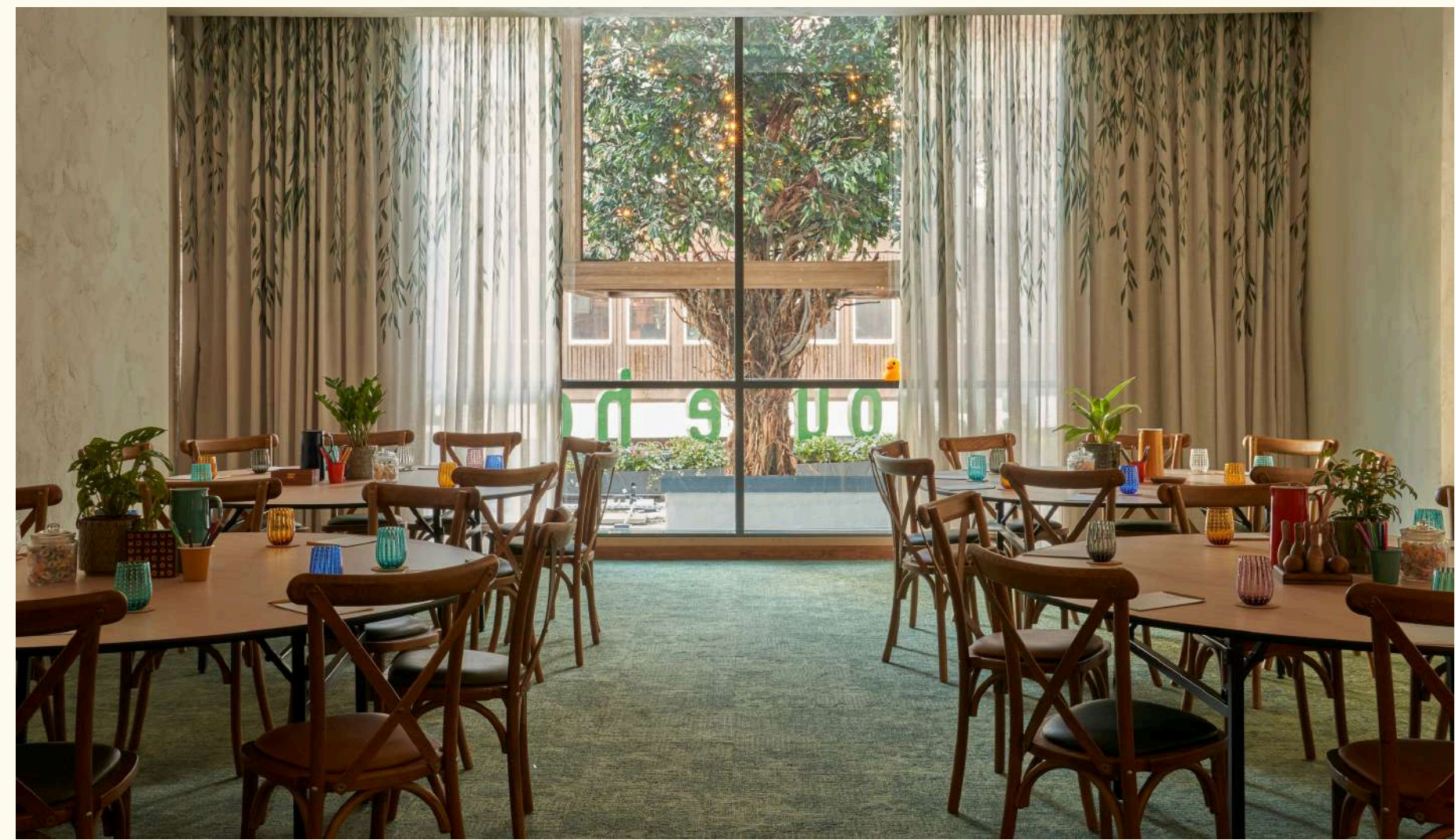
43 x Premium seats with USB sockets.
1 x Wheelchair access point.

INPUT SOURCES

Multi-format presentation switch supporting HDMI matrix, DVDs, & streaming services.

ACCESSIBILITY

2 x Dolby Accessibility Solutions, integrating hearing impaired amplified audio, visually impaired narrative audio, & closed captions, in a dedicated receiver with touchscreen capability.
4 x Infra-Red headphones for assisted listening.



CHESTNUT

the latest state-of-the-art sound & projection equipment for a fully immersive audio-visual experience.

PROJECTION

4K RGB Barco Laser projector Dolby IMS3000 with 10TB NAS storage.

AUDIO

Dolby Atmos with bi-amplified audio and 28 surround channels. Qsys control with QSC speakers and 44 channels of amplifiers.

SCREEN

A 5-meter-wide image on a matt white screen surface.

SEATS

43 x Premium seats with USB sockets.
1 x Wheelchair access point.

INPUT SOURCES

Multi-format presentation switch supporting HDMI matrix, DVDs, & streaming services.

ACCESSIBILITY

2 x Dolby Accessibility Solutions, integrating hearing impaired amplified audio, visually impaired narrative audio, & closed captions, in a dedicated receiver with touchscreen capability.
4 x Infra-Red headphones for assisted listening.



WALNUT

the latest state-of-the-art sound & projection equipment for a fully immersive audio-visual experience.

PROJECTION

4K RGB Barco Laser projector Dolby IMS3000 with 10TB NAS storage.

AUDIO

Dolby Atmos with bi-amplified audio and 28 surround channels. Qsys control with QSC speakers and 44 channels of amplifiers.

SCREEN

A 5-meter-wide image on a matt white screen surface.

SEATS

43 x Premium seats with USB sockets.
1 x Wheelchair access point.

INPUT SOURCES

Multi-format presentation switch supporting HDMI matrix, DVDs, & streaming services.

ACCESSIBILITY

2 x Dolby Accessibility Solutions, integrating hearing impaired amplified audio, visually impaired narrative audio, & closed captions, in a dedicated receiver with touchscreen capability.
4 x Infra-Red headphones for assisted listening.



ACORN

the latest state-of-the-art sound & projection equipment for a fully immersive audio-visual experience.

PROJECTION

4K RGB Barco Laser projector Dolby IMS3000 with 10TB NAS storage.

AUDIO

Dolby Atmos with bi-amplified audio and 28 surround channels. Qsys control with QSC speakers and 44 channels of amplifiers.

SCREEN

A 5-meter-wide image on a matt white screen surface.

SEATS

43 x Premium seats with USB sockets.
1 x Wheelchair access point.

INPUT SOURCES

Multi-format presentation switch supporting HDMI matrix, DVDs, & streaming services.

ACCESSIBILITY

2 x Dolby Accessibility Solutions, integrating hearing impaired amplified audio, visually impaired narrative audio, & closed captions, in a dedicated receiver with touchscreen capability.
4 x Infra-Red headphones for assisted listening.



EVENT SPACES *First Floor*



MEETING ROOMS & Event Spaces

WILLOW (445M²)
WILLOW I - THEATRE
276 SEATS
WILLOW II - THEATRE
182 SEATS
WILLOW I & II - THEATRE
458 SEATS

WILLOW I - CABARET
128 SEATS
WILLOW II - CABARET
96 SEATS
WILLOW I & II - CABARET
240 SEATS

WILLOW I - CLASSROOM
60 SEATS
WILLOW II - CLASSROOM
40 SEATS
WILLOW I & II - CLASSROOM
100 SEATS

WILLOW I - ROUND TABLE
210 SEATS
WILLOW II - ROUND TABLE
120 SEATS
WILLOW I & II - ROUND TABLE
350 SEATS

FLIX SCREENING DEN (85 M²)
43 SEATS + 1 WHEELCHAIR SPACE

CEDAR (87M²)
46 PAX - CABARET
60 PAX - ROUND TABLE
80 - THEATRE STYLE

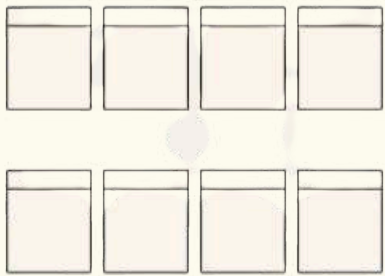
CHESTNUT (42.8M²)
16 PAX

WALNUT (29M²)
12 PAX

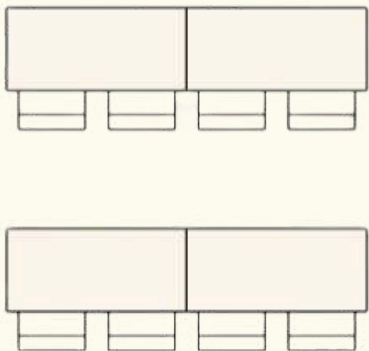
ACORN (14M²)
8 PAX

THE HIDEOUT (110M²)
ON THE 15TH FLOOR
56 - STANDING

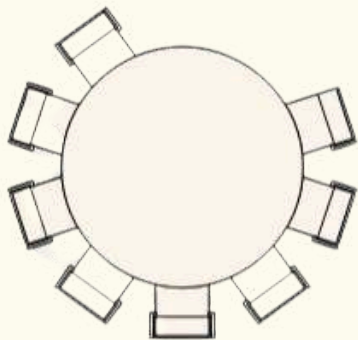
MEETING ROOMS & Event Spaces



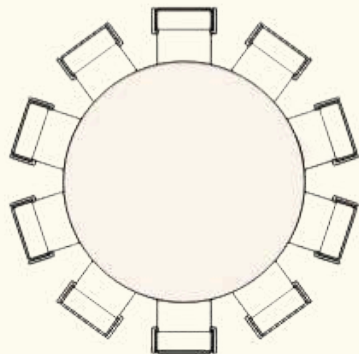
WILLOW (445M²)
WILLOW I - THEATRE
276 SEATS
WILLOW II - THEATRE
182 SEATS
WILLOW I & II - THEATRE
458 SEATS



WILLOW I - CLASSROOM
138 SEATS
WILLOW II - CLASSROOM
94 SEATS
WILLOW I & II - CLASSROOM
232 SEATS



WILLOW I - CABARET
128 SEATS
WILLOW II - CABARET
96 SEATS
WILLOW I & II - CABARET
240 SEATS



WILLOW I - ROUND TABLE
210 SEATS
WILLOW II - ROUND TABLE
140 SEATS
WILLOW I & II - ROUND TABLE
350 SEATS

FLIX SCREENING DEN (85 M²)
43 SEATS + 1 WHEELCHAIR SPACE

CEDAR (87MÇ)
46 PAX - CABARET
60 PAX - ROUND TABLE
80 - THEATRE STYLE

CHESTNUT (42.8MÇ)
16 PAX

WALNUT (29MÇ)
12 PAX

ACORN (14MÇ)
8 PAX

THE HIDEOUT (110MÇ)
ON THE 15TH FLOOR
56 - STANDING

SEASONAL EVENT MENUS

by Mary-Ellen McTague

Fuel your events with local farm-to-table fare curated by Mary-Ellen McTague. From traditional breakfasts and baked goods to delicious lunch and dinner dishes—enjoy every bite knowing it boasts the freshest ingredients, picked-to-order from nearby organic and regenerative farms.

Mary-Ellen McTague, has over 20 years' experience in hospitality, spanning multiple sizes and styles of operation. Mary-Ellen's outstanding career began in the then-Michelin starred Sharrow Bay Country House hotel, followed by four years spent working with Heston Blumenthal, firstly as Sous Chef at the 3 Michelin-starred Fat Duck, then as Research and Development Chef, working on historical food for Blumenthal's Hind's Head and Fat Duck menus.

A true pioneer in sustainable kitchen practises over the last six years, Mary-Ellen brings this ethos of sustainability in modern cuisine to the banqueting spaces. Fundamental to this will be a zero-waste focus and her modern twist on traditional cooking techniques. The menus will change seasonally, with a focus on utilising produce sourced from local farms.



EAT & Drink

PIP

BY MARY-ELLEN MCTAGUE

Modern British cuisine re-imagined with fresh seasonal produce from sustainable local growers.

SISTER MOON (OPENING 2025)

BY SAM GRAINGER

Elevated Southeast Asian menu, with a fusion of European ingredients & culinary techniques.

THE NEST (OPENING 2025)

14TH FLOOR BAR

Panoramic rooftop bar with an eclectic cocktail menu, & unparalleled views of the city

THE HIDEOUT (OPENING 2025)

15TH FLOOR LOUNGE

Panoramic rooftop bar with an eclectic cocktail menu, & unparalleled views of the city



PIP

Restaurant & Bar

At Pip, Mary-Ellen McTague and her team reimagine local culinary heritage through seasonal, low-waste menus prepared using the bountiful produce of the North West.

Pip's hyper-seasonal cocktails are created in synergy with the kitchen to use spent ingredients to complement the food, served alongside a low-intervention wine offering.

The space itself feels as inviting as the menus, with warm woods, ambient lighting, and communal tables that encourage conversation.

Take over Pip for the ultimate private event. Enjoy exclusive access to our vibrant restaurant and bar. A full buyout allows for flexible layouts, and an unforgettable experience.

EVENTS AT PIP CAPACITIES

100 people seated

150 people standing



CHEF PARTNERS

Treehouse Manchester is working with a stellar line-up of the North West's highly regarded chefs and restaurateurs, Mary-ellen McTague, Sam Grainger, Luke Cowdrey and Justin Crawford across the F&B offerings.

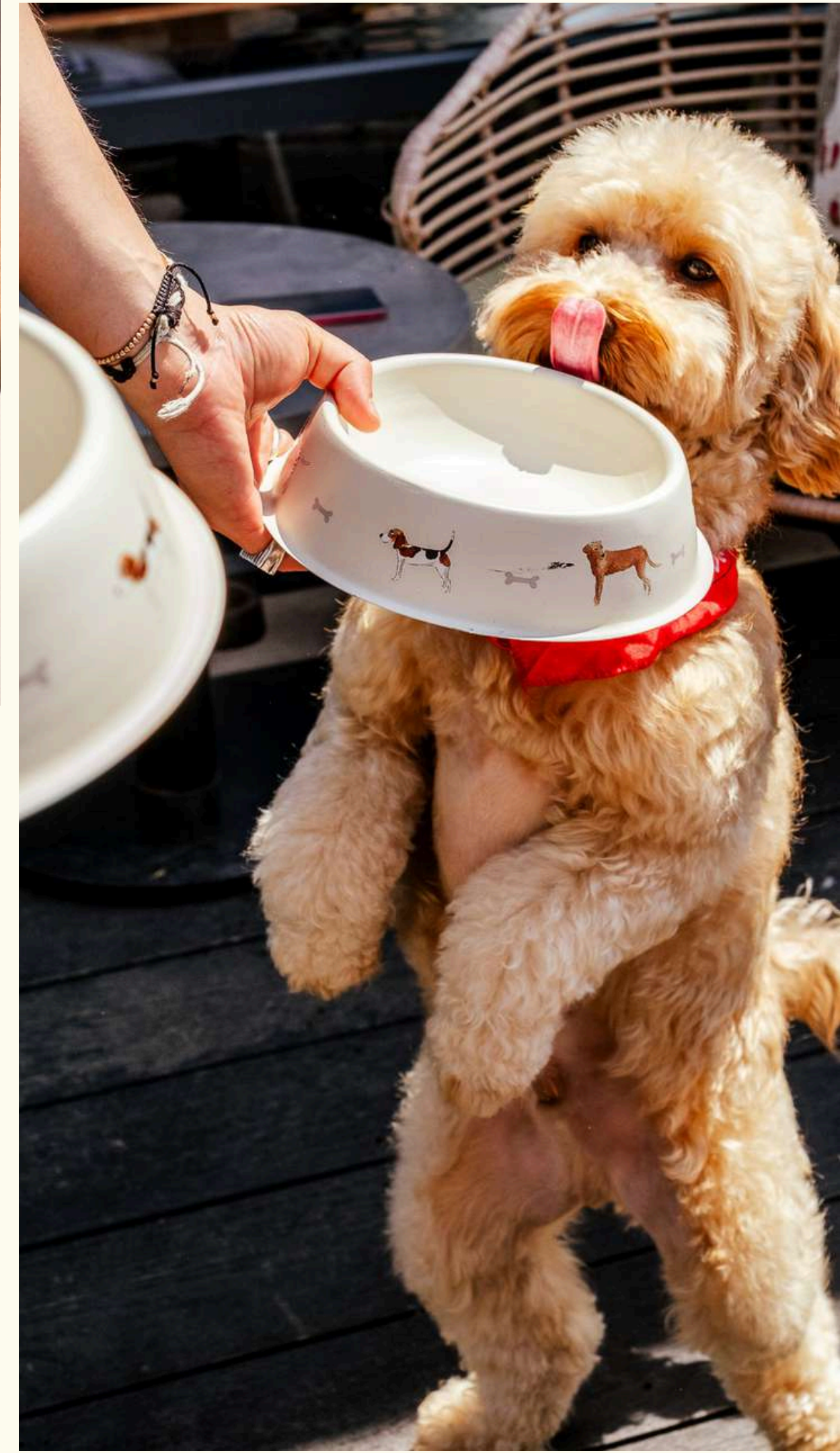


PLAY

Amenities and facilities:
Playground Gym, Padel at
The Pollen Club, Knick
Knacks retail, meeting
rooms, Flix screening den,
variety of rooms & suite
options

Our Treehouse crew of Fun Finders will
be ready to let you in on their best
kept Manchester secrets. Ask for their
favourite spots to dine, drink, shop,
and explore the city.

Four-legged friends are welcome too.
We know dogs are family too. That's
why your four-legged co-pilot stays
free in our hotel rooms. No pet fees.
No fuss. Just snoozes, sniffs, and a
little mischief along the way.



PAD&L

at The Pollen Club

Rally on the Padel Courts at The Pollen Club next to Treehouse Manchester. The Pollen Club offers two state-of-the-art courts under a waterproof canopy, shielding players from Manchester's infamous weather ensuring you get non-stop court action.



WORKOUT

at The Playground

Stretch, sweat, repeat. Our gym is your go-to for feel-good movement, whether you're chasing personal bests or just fancy a quick stretch. Packed with top-notch equipment, it's a space to move your way. Newbie or seasoned pro, everyone's welcome to get stuck in.

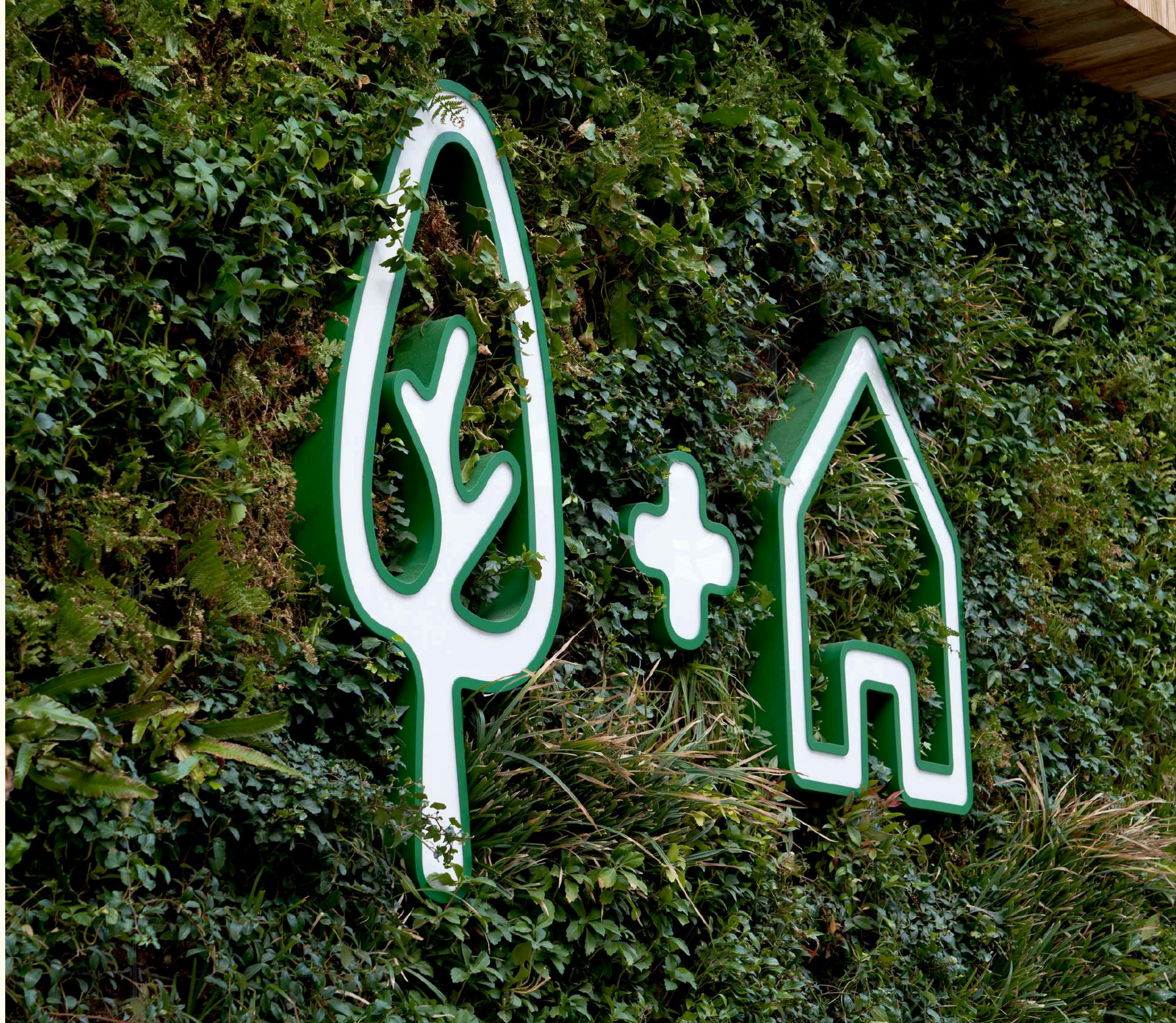


SUSTAINABILITY AT *Treehouse Manchester*

We know our guests and travellers are thinking about sustainability and that it is important to them. Treehouse Hotels knows we have a responsibility to respect nature and have a responsible mindset.

From conscious construction of our hotel, recycling and repurposing materials, including giving new life to decorative pieces by finding found objects locally, to our ethically sourced supplies, and responsible consumption, we know our choices matter.

Guests can enjoy our Treehouse honey, harvested from 9 beehives on the hotel's roof, made by 180k bees, who are cared for by the Volition community volunteer group from Manchester Cathedral.



OUR TREEHOUSE *Family*

TREEHOUSE HOTEL LONDON
OPENED NOVEMBER 2019

Located in London's vibrant
Marylebone neighbourhood.

95 rooms (starting at 23m²);
including 12 suites

Street Level Coffee Shop:
Backyard

Ground Floor Restaurant:
Pizzeria Mozza London

15th Floor Restaurant:
Madera at Treehouse London

16th Floor Rooftop Lounge:
The Nest



OUR TREEHOUSE *Family*

TREEHOUSE HOTEL
SILICON VALLEY
OPENED APRIL 2025

Located in London's vibrant
Marylebone neighbourhood.

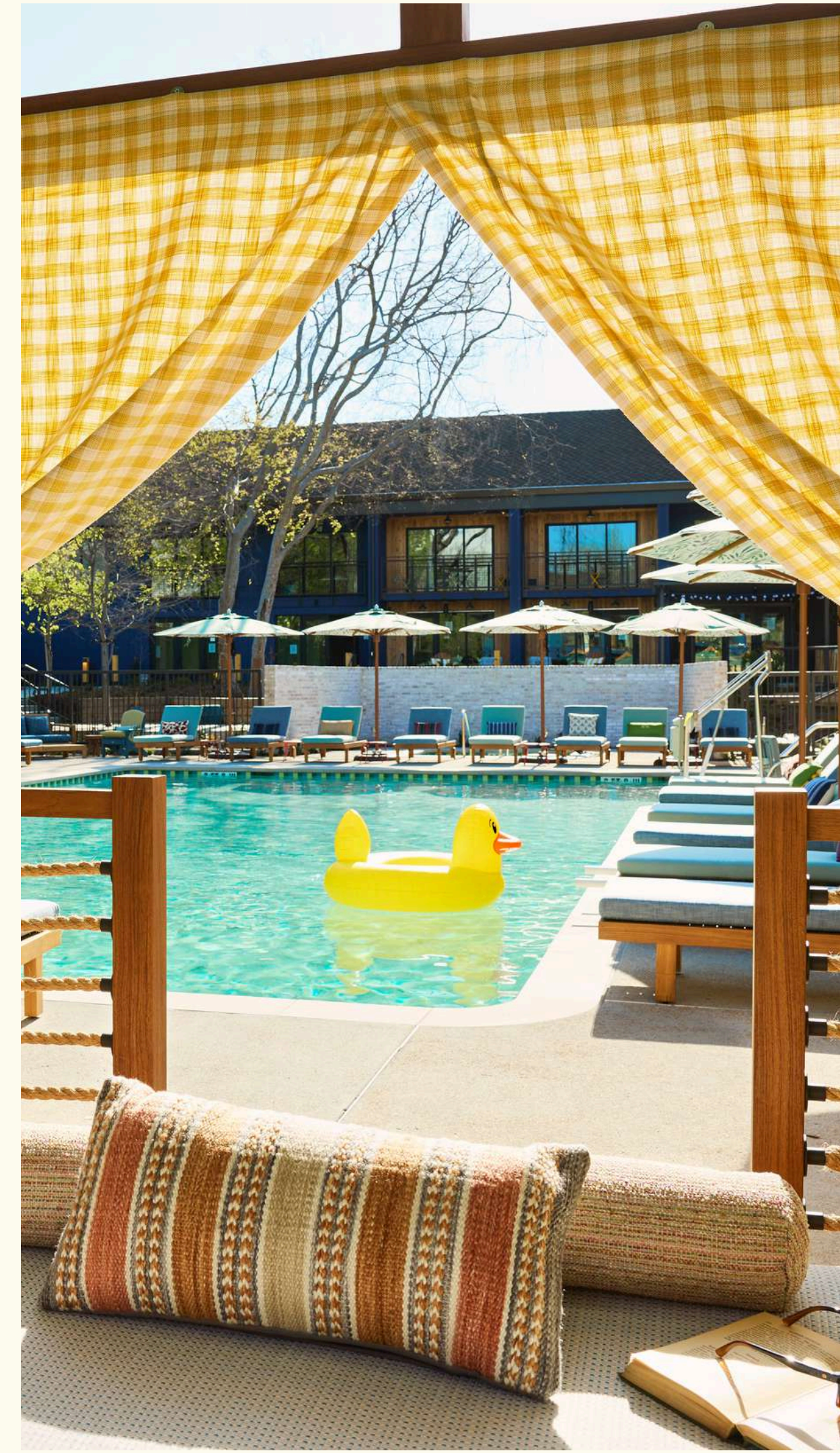
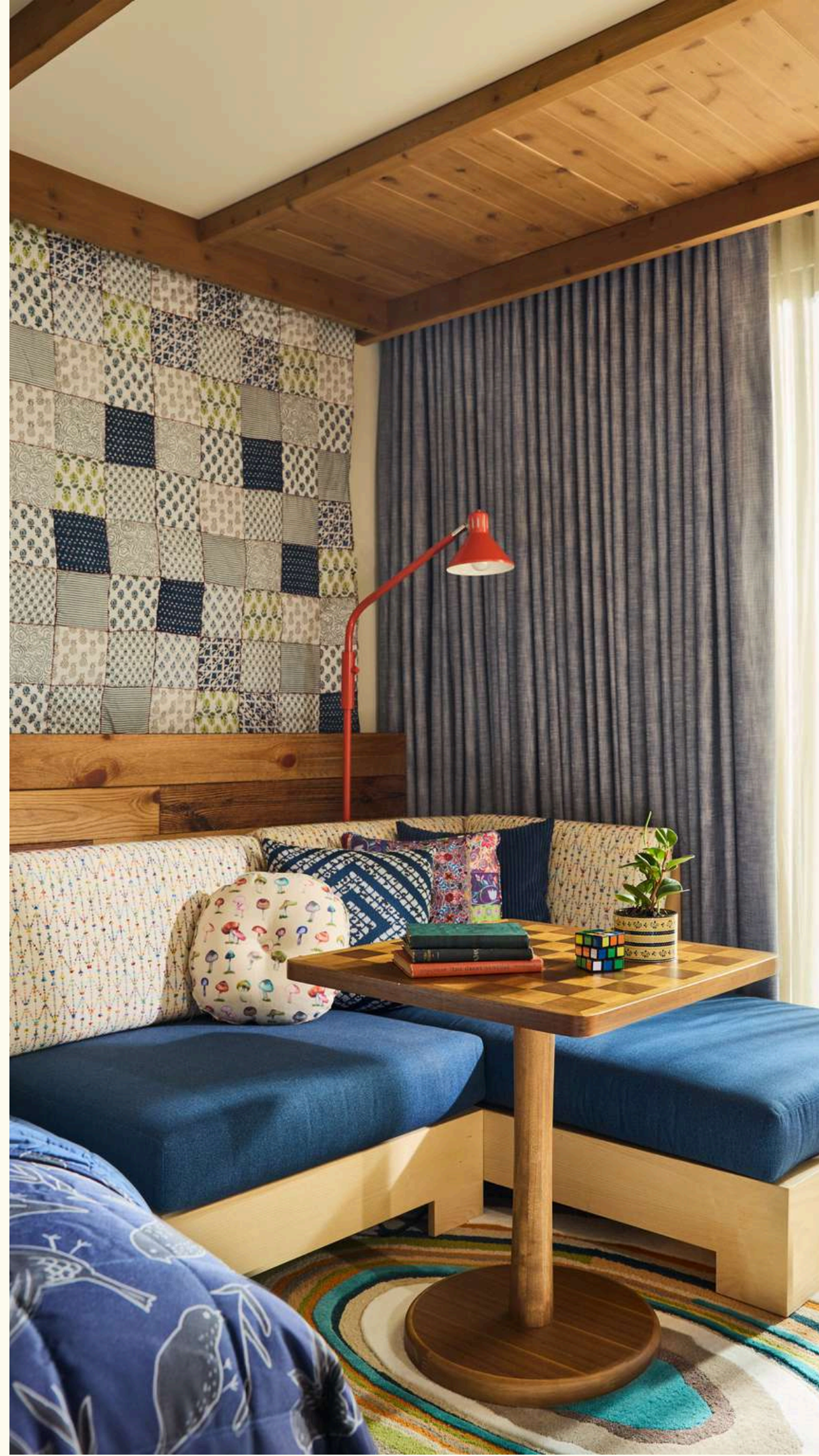
95 rooms (starting at 23m²);
including 12 suites

Street Level Coffee Shop:
Backyard

Ground Floor Restaurant:
Pizzeria Mozza London

15th Floor Restaurant:
Madera at Treehouse London

16th Floor Rooftop Lounge:
The Nest







treehouse
MANCHESTER

THMA-SALES@TREEHOUSEHOTELS.COM
TREEHOUSEHOTELS.COM/MANCHESTER
@STAYTREEHOUSE @PIPMCR

